



**DISTROCAN**



# CATALOGUE DE PRODUIT

2025

333 St-Hubert, Laval, QC, H7G2Y5  
1-800-619-0916 • [info@distrocan.ca](mailto:info@distrocan.ca)

[distrocan.ca](http://distrocan.ca)

# CEMENTITIOUS PRODUCTS

## ACCESSORIES



**TAMPICO FIBER BRUSH -  
13" X 1" X 3"**

**SKU:** 95006

## MORTARS



### **DISTROCAN - JET SET 1-3 MIN**

**SKU:** JETSET13



### **DISTROCAN - JET SET 3-5 MIN**

**SKU:** JETSET35



### **DISTROCAN - JET SET 5-10 MIN**

**SKU:** JETSET510



### **MAPEI - PLANITOP 23**

**SKU:** 2758720



### **MAPEI - PLANITOP X**

**SKU:** 2757423



### **MAPEI - PLANITOP XS**

**SKU:** 2757323

# DAMP PROOFING PRODUCTS

## ACCESSORIES



**CAGE FOR ROLLER - 9 1/2"**

**SKU: ZFR499N**



**PAINT SLEEVES - PACK OF 10**

**SKU: Z9T1510**



**PLASTIC DEEP TRAY - 2L**

**SKU: ZTR200**



**SPLIT FOAM SLEEVE - 9" X 3/4"**

**SKU: Z9SF20**



**TAMPICO FIBER BRUSH -  
13" X 1" X 3"**

**SKU:** 95006



**THIROCO T20 - PLASTIC  
CEMENT**

**SKU:** T20020



**THIROCO T20W - PLASTIC  
CEMENT - WINTER GRADE**

**SKU:** T20W20

## SEALERS



**BAKOR 700-01**

**SKU:** BK70001074

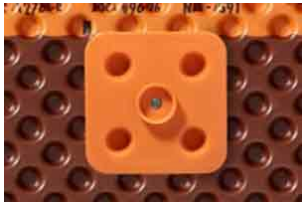


**THIROCO T-60**

**SKU:** T60189

# DELTA PRODUCTS

## ACCESSORIES



**DELTA FASTNER**

**SKU:** 22610005 / 22610006



**DELTA MOLD STRIP**

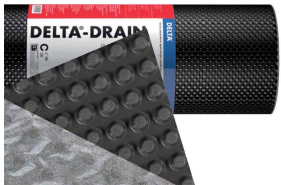
**SKU:** 22610021



**DELTA SEALANT**

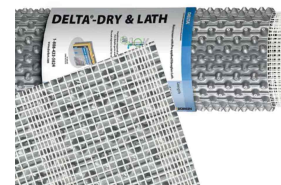
**SKU:** 22610015

## MEMBRANES



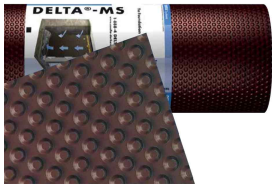
### DELTA DRAIN

SKU: 22600014 / 22600015



### DELTA DRY & LATH

SKU: N/A



### DELTA MS

SKU: 22600001 / 22600002 / 22600003 /  
22600004 / 22600005 / 22600006



### DELTA VENT S

SKU: N/A



### DELTA VENT SA

SKU: N/A



# FITTINGS

## HDPE



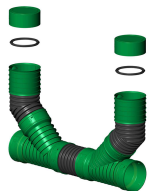
**3" TEE**

SKU: 1T0033



**3" / 4" MALE CAP**

SKU: 1B0035 / 1B0045



**4" CLEANOUT CHIMNEY**

SKU: 830004 / 2B100CG



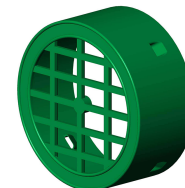
**4" ELBOW, 90°**

SKU: 1C0049



**4" FEMALE CAP WITH CLIP**

SKU: 2B100CV



**4" FEMALE GRATE CAP**

SKU: 1TTG04C



**4" HDPE PIPE TO PVC PIPE  
ADAPTER**

**SKU:** 1ADRC04



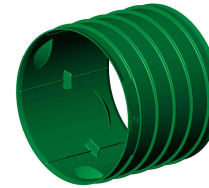
**4" TEE-WYE**

**SKU:** 1TY044



**4" UNIVERSAL DRAIN  
ADAPTER**

**SKU:** 1ADRCU04



**4" FEMALE-FEMALE  
COUPLER**

**SKU:** 3MCC004C



**4" WYE**

**SKU:** 1DY004

## PVC-MUNICIPAL



**4" 5" 6" 8" COUPLING**

**SKU:** 33ACOUP04GG



**4" 5" 6" 8" ELBOW 22 1/2°**

**SKU:** 21A2204GG



**4" 5" 6" 8" ELBOW 45°**

**SKU:** 21A4504GG



**4" 5" 6" 8" ELBOW 45°**

**SKU:** 22A4504GS



**4" 5" 6" 8" TEE**

**SKU:** 07A040404GGG



**4" 5" 6" 8" WYE**

**SKU:** 01A040404GGG



**4" 6" 8" 90° SHORT  
RADIUS**

**SKU:** 21A9004GG



**4" 6" 8" 90° SHORT  
RADIUS**

**SKU:** 22A9004GS



**4" 6" 8" TEE WYE**

**SKU:** 04A040404GGG



**4" 90° LONG RADIUS**

**SKU:** 21A9004LRGG

## PVC-PLUMBING



**4" CAP, NO THREAD**

**SKU:** P1604



**4" COUPLING WITH STOPPER**

**SKU:** P604



**4" ELBOW, 22 1/2°**

**SKU:** P1704



**4" ELBOW, 45°**

**SKU:** P404



**4" ELBOW, 90° LONG TURN**

**SKU:** P256



**4" FITTING CLEANOUT**

**SKU:** P1504



## 4" FITTING CLEANOUT

SKU: P1404



## 4" PUSH FIT ADAPTER

SKU: IC44P



## 4" TEE

SKU: P104



## 4" TEE-WYE

SKU: P156



## 4" WYE

SKU: P304



## 4" ELBOW, 45°

SKU: P504



## 4" THREADED PLUG

SKU: P1154

## RUBBER COUPLINGS



**CAST IRON/PLASTIC/STEEL  
TO CAST  
IRON/PLASTIC/STEEL**

**SKU:** 1056-44



**CONCRETE TO CAST  
IRON/PLASTIC/STEEL**

**SKU:** 1006-44



**DUCTILE IRON TO CAST  
IRON/PLASTIC/STEEL**

**SKU:** 1051-44

# INJECTION PRODUCTS

## ACCESSORIES



### ALEMITE GASKET REPAIR KIT

SKU: 336523



### ALEMITE GREASE GUN FOR POLYURETHANE INJECTION

SKU: 586-B



### ALEMITE SPRING REPAIR KIT

SKU: 393756-6



### BALL VALVE 1/8" X 1/8" FF THREADED BOTH SIDES

SKU: 14.1102





## BOX OF 50 PROFESSIONAL BLACK NITRILE GLOVES

SKU: 34606-M / 34606-XL



## BRASS FITTING FEMALE TO MALE PIPE ADAPTER 1/8" MALE TO 1/4" FEMALE

SKU: 33.1912



## BRASS FITTING STREET TEE 1/8" FEMALE WITH TWO 1/8" FEMALE

SKU: 33.3410



## COUPLER FOR INJECTION

SKU: DISTROCOUPRED



## FLEXIBLE HOSE FOR INJECTION PUMP

SKU: DISTROWHIP40



## HOSE BARB TO MALE PIPE CONNECTOR 1/8" TO 1/8"

SKU: 33.4110



## INJECTION HOSE ADAPTER 90°

SKU: FU-3459-04-02



## INJECTION HOSE ADAPTER STRAIGHT

SKU: FU-3269-04-02



## **INJECTION HOSES FOR GREASE GUNS**

**SKU:** ECH-720-02MM35



## **INJECTION PACKER WITH ZERK**

**SKU:** DISTROPACKNYL



## **MALE CONNECTOR 1/4" TO THREAD 1/8"**

**SKU:** 32.1156



## **NUT SETTER 5/16" NON-MAGNETIC FOR ZERKS**

**SKU:** FU34590402



## **NYLON TUBING 1/4" OD**

**SKU:** 40.1140



## **RCF EPOXY GUN DUAL CARTRIDGE**

**SKU:** FG20023



## **REDUCER MALE CONNECTOR 3/8" TO 1/4"**

**SKU:** 32.3382



## **REDUCER MALE CONNECTOR 5/16" TO 1/4"**

**SKU:** 32.3370



**STAINLESS STEEL  
SILICONE FLUID FILLED  
PRESSURE GAUGE - 0 -  
1000 PSI - LM MOUNT**

**SKU:** 62.6670



**STAINLESS STEEL  
SILICONE FLUID FILLED  
PRESSURE GAUGE - 0 -  
10000 PSI - LM MOUNT**

**SKU:** 62.6695



**STAINLESS STEEL  
SILICONE FLUID FILLED  
PRESSURE GAUGE - 0 -  
4000 PSI - LM MOUNT**

**SKU:** 62.6688



**TEFLON 1/2" X 40'**

**SKU:** 33.9080



**UNION MALE CONNECTOR  
1/4" TO 1/4"**

**SKU:** 32.2158

## EPOXY PRODUCTS



### EPICOL T

**SKU:** 120298



### MAPEI EPOJET

**SKU:** 1561144 (399ml) / 1561111KIT (11.35L)



### RCF HIGH STRENGTH ANCHORING EPOXY PASTE

**SKU:** FG20075 (600ml) / FG20177 (2 Gal.)



### RCF STRUCTURAL EPOXY INJECTION RESIN

**SKU:** FG20076

## POLYURETHANE RESINS



### DUAL CARTRIDGE RCF POLYURETHANE EXPANDING FOAM

SKU: FG20077



### MAPEI - RESFOAM 1KM

SKU: 2446120



### MAPEI - RESFOAM HB 45

SKU: 2445958



### MAPEI - RESFOAM HL 35

SKU: 2445619-1



### MAPEI - RESFOAM PF

SKU: 2445419



### SPETEC GEN ACC

SKU: 102426



## SPETEC GEN ACC FAST

SKU: 102428



## SPETEC GT350

SKU: 101888



## SPETEC H100

SKU: 101895



## SPETEC PUMP CLEANER

SKU: 103001



## SPETEC SEAL F400

SKU: 101884



## STOPAQ 2100 AQUASTOP

SKU: 103025

## LANDSCAPING

## ACCESSORIES



### LANDSCAPING NAILS - SPIRAL

SKU: CLOUSPLSP250



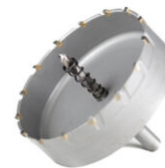
### LANDSCAPING NAILS - COMMON

SKU: CLOUSPLC50



### PLASTIC BORDER FOR PAVERS

SKU: N/A



### TCT HOLE SAW

SKU: DISTROTCT325

# PIPES

## HDPE



**3" PERFORATED (TYPE 2)**

SKU: 100304 / 100313



**4" NON-PERFORATED**

SKU: 100455



**4" PERFORATED (TYPE 2)**

SKU: 100442



**4" SOLFLO MAX NON-PERFORATED**

SKU: 320420 / 320415



**4" SOLIFLEX PERFORATED (TYPE 3)**

SKU: 120444



**4" PERFORATED (MEGA 3)**

SKU: 100461 / 100447 / 100445





## PVC-MUNICIPAL



### SDR28

**SKU:** SG2804014WH / SG2805014WH /  
SG2806014WH



### SDR35

**SKU:** SG3504014 / SG3505014 / SG3506014 /  
SG3508014

## PVC-PLUMBING



**4" PERFORATED, 7 HOLE**

**SKU:** DISTROPVC47TROUS



**4" PERFORATED, 3 HOLE**

**SKU:** DISTROPVC43TROUS

# STRUCTURAL REINFORCEMENT

## STRUCTURAL REPAIR KITS



**CONCRETE CRACK LOCK  
KIT - 20 PACK WITH HIGH  
STRENGTH ANCHORING  
EPOXY PASTE**

**SKU:** FG20040



**KIT BOWED WALL REPAIR  
UNIDIRECTIONAL VERTICAL  
400GSM 6" X 8'**

**SKU:** FG20036



**KIT CRACK REPAIR  
BIDIRECTIONAL 560GSM  
12" X 8'**

**SKU:** FG20053

# WATER PROOFING MEMBRANES

## ACCESSORIES



### BAKOR BLUESKIN ADHESIVE

SKU: BK101677



### BAKOR POLY FAB

SKU: BKPF600



### BAKOR POLYPROPYLENE PROTECTION BOARD

SKU: BK99031458



### BAKOR YELLOW JACKET

SKU: BK99006876 (6" x 150') / BK99006875  
(36" x 150')



## CAGE FOR ROLLER - 9 1/2"

SKU: ZFR499N



## HENRY 930-18 POLY-TAC

SKU: BK018621



## MEAN CLEAN

SKU: DISTROMEAN5GAL



## PACK OF 10 PAINT SLEEVES

SKU: Z9T15-10



## PLASTIC DEEP TRAY - 2L

SKU: ZTR200



## POLYBITUME 570-05

SKU: BK570S664 (300ml) / BK570S686 (850ml) / 694266611003 (10kg)



## ROBUST CAULKING GUN FOR 300ML CARTRIDGES

SKU: 106617



## SPLIT FOAM SLEEVE - 9" X 3/4"

SKU: Z9SF20



## **SUPER INDUSTRIAL STRIPPING GLOVE X-LARGE**

**SKU: 4003**



## **TAMPICO FIBER BRUSH - 13" X 1" X 3"**

**SKU: 95006**



## **THIROCO T20 - PLASTIC CEMENT**

**SKU: T20020**



## **THIROCO T20W - PLASTIC CEMENT - WINTER GRADE**

**SKU: T20W20**

## SELF-ADHESIVE



**HENRY BLUESKIN WP200**

**SKU:** HEWP200937



## SOLVENT BASED



**BAKOR AQUA-BLOC 770-06**

**SKU:** BK77006070

# THERMOSEALING MEMBRANES



**BAKOR NP180 PP**

**SKU:** BH180PP985

## URETHANE BASED



**HENRY CM100**

**SKU:** HE78060073

## WATER BASED



### **BAKOR AQUA-BLOC 720-38**

**SKU:** BK72038074



### **IMPERMASHIELD R COAT**

**SKU:** IMPERMAR5



### **IMPERMASHIELD SD SPRAY COAT**

**SKU:** IMPERMASD55



### **IMPERMASHIELD T COAT**

**SKU:** IMPERMAT5

## DRAIN BOXES

### GALVANIZED



**DRAIN BOX - 16" X 16" X 12"**

**SKU:** DBG1616



**DRAIN BOX - 2'**

**SKU:** CP24-12-12



**DRAIN BOX - 4'**

**SKU:** CP48-12-12



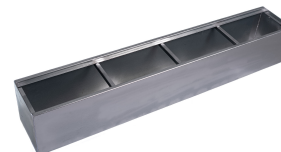
**DRAIN BOX - 4' X 6" X 12"**

**SKU:** DBG96-6-12



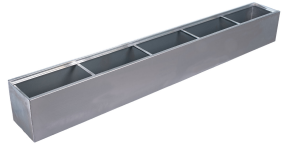
**DRAIN BOX - 4' X 6" X 12"**

**SKU:** DBG48-6-12



**DRAIN BOX - 6'**

**SKU:** DBG72-12-12



## **DRAIN BOX - 8'**

**SKU:** DBG96-12-12

## PLASTIC



**ALUMINUM CHECKER  
PLATE COVER - 18" X 24"**

**SKU:** CA1824



**FLOOR DRAIN - 12" X 12"  
X 12"**

**SKU:** 1ZD1212



**FLOOR DRAIN - 18" X 24"  
X 18"**

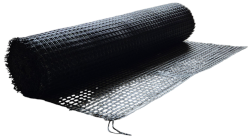
**SKU:** 1ZD1824P



**FLOOR DRAIN - 18" X 24"  
X 25"**

**SKU:** 1ZD2425P

# GEOSYNTHETICS



## **GEOMAX** GEOGRID

**SKU:** GEOMAXGG4350



## **GEOMAX** WOVEN GEOTEXTILE

**SKU:** GEOMAXW13350



## **GEOMAX** GEOTEXTILE

**SKU:** GNT12350 GNT3350 GNT6350



## **GEOMAX** NON WOVEN GEOTEXTILE

**SKU:** GNT12350 / GNT3350 / GNT6350



# SUMP PUMP SYSTEMS

## ACCESSORIES



### DUAL FLOAT - STANDARD CONTROLLER

SKU: N/A



### WIFI MODULE

SKU: PS-WIFI2

## PITS



**18" X 30" RADON-PROOF  
PIT**

**SKU:** SF30BA



**18" X 22" / 30" RADON-  
PROOF PIT COVER**

**SKU:** SF2000E



**18" X 22" RADON-PROOF  
PIT**

**SKU:** SF20



**20" X 24" CORRUGATED  
PUMP PIT**

**SKU:** 1UCU025



**20" X 24" CORRUGATED  
PUMP COVER**

**SKU:** 1UCV025

# PUMPS



## BACKUP COMBO PUMP

SKU: PSC22



## CAST IRON PUMP

SKU: N/A

# WINDOW WELLS



## WINDOW WELLS

**SKU:** MG1082222

## ALL PRODUCTS



### **GEOMAX WOVEN GEOTEXTILE**

**SKU:** GEOMAXW13350



### **GEOMAX GEOTEXTILE**

**SKU:** GNT12350 GNT3350 GNT6350



### **GEOMAX NON WOVEN GEOTEXTILE**

**SKU:** GNT12350 / GNT3350 / GNT6350



### **4" COUPLING**

**SKU:** 1M0040



### **ALEMITE GASKET REPAIR KIT**

**SKU:** 336523



### **ALEMITE GREASE GUN FOR POLYURETHANE INJECTION**

**SKU:** 586-B



## ALUMINUM CHECKER PLATE COVER - 18" X 24"

SKU: CA1824



## BACKUP COMBO PUMP

SKU: PSC22



## BAKOR 700-01

SKU: BK70001074



## BAKOR AQUA-BLOC 720-38

SKU: BK72038074



## BAKOR AQUA-BLOC 770-06

SKU: BK77006070



## BAKOR BLUESKIN ADHESIVE

SKU: BK101677



## BAKOR NP180 PP

SKU: BH180PP985



## BAKOR POLY FAB

SKU: BKPF600



## BAKOR POLYPROPYLENE PROTECTION BOARD

SKU: BK99031458



## BAKOR YELLOW JACKET

SKU: BK99006876 (6" x 150') / BK99006875 (36" x 150')



## BALL VALVE 1/8" X 1/8" FF THREADED BOTH SIDES

SKU: 14.1102



## BRASS FITTING FEMALE TO MALE PIPE ADAPTER 1/8" MALE TO 1/4" FEMALE

SKU: 33.1912



## BRASS FITTING STREET TEE 1/8" FEMALE WITH TWO 1/8" FEMALE

SKU: 33.3410



## CAGE FOR ROLLER - 9 1/2"

SKU: ZFR499N



## CAST IRON PUMP

SKU: N/A

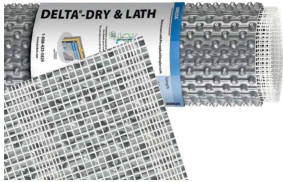


## CONCRETE CRACK LOCK KIT - 20 PACK WITH HIGH STRENGTH ANCHORING



## COUPLER FOR INJECTION

SKU: DISTROCOUPRED



## DELTA DRY & LATH

SKU: N/A



## DELTA MOLD STRIP

SKU: 22610021



## DELTA SEALANT

SKU: 22610015



## EPOXY PASTE

SKU: FG20040

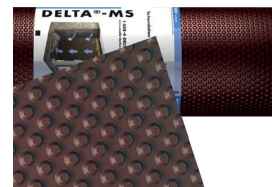
## DELTA DRAIN

SKU: 22600014 / 22600015



## DELTA FASTNER

SKU: 22610005 / 22610006



## DELTA MS

SKU: 22600001 / 22600002 / 22600003 / 22600004 / 22600005 / 22600006



## DELTA VENT S

SKU: N/A





## DELTA VENT SA

SKU: N/A



## DISTROCAN - JET SET 1-3 MIN

SKU: JETSET13



## DISTROCAN - JET SET 3-5 MIN

SKU: JETSET35



## DISTROCAN - JET SET 5-10 MIN

SKU: JETSET510



## DRAIN BOX - 16" X 16" X 12"

SKU: DBG1616



## DRAIN BOX - 2'

SKU: CP24-12-12



## DRAIN BOX - 4'

SKU: CP48-12-12



## DRAIN BOX - 4' X 6" X 12"

SKU: DBG48-6-12



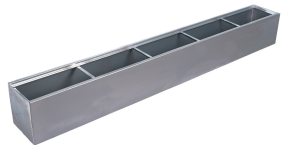
### **DRAIN BOX - 4' X 6" X 12"**

**SKU:** DBG96-6-12



### **DRAIN BOX - 6'**

**SKU:** DBG72-12-12



### **DRAIN BOX - 8'**

**SKU:** DBG96-12-12



### **DUAL CARTRIDGE RCF POLYURETHANE EXPANDING FOAM**

**SKU:** FG20077



### **DUAL FLOAT - STANDARD CONTROLLER**

**SKU:** N/A



### **EPICOL T**

**SKU:** 120298



### **FLEXIBLE HOSE FOR INJECTION PUMP**

**SKU:** DISTROWHIP40



### **HENRY 930-18 POLY-TAC**

**SKU:** BK018621



## HENRY BLUESKIN WP200

SKU: HEWP200937



## HENRY CM100

SKU: HE78060073



## HOSE BARB TO MALE PIPE CONNECTOR 1/8" TO 1/8"

SKU: 33.4110



## IMPERMASHIELD R COAT

SKU: IMPERMAR5



## IMPERMASHIELD SD SPRAY COAT

SKU: IMPERMASD55



## IMPERMASHIELD T COAT

SKU: IMPERMAT5



## INJECTION HOSE ADAPTER 90°

SKU: FU-3459-04-02



## INJECTION HOSE ADAPTER STRAIGHT

SKU: FU-3269-04-02



## INJECTION PACKER WITH ZERK

SKU: DISTROPACKNYL



## KIT BOWED WALL REPAIR UNIDIRECTIONAL VERTICAL 400GSM 6" X 8'

SKU: FG20036



## KIT CRACK REPAIR BIDIRECTIONAL 560GSM 12" X 8'

SKU: FG20053



## LANDSCAPING NAILS - SPIRAL

SKU: CLOUSPLSP250



## LANDSCAPING NAILS - COMMON

SKU: CLOUSPLC50



## MALE CONNECTOR 1/4" TO THREAD 1/8"

SKU: 32.1156



## MAPEI - PLANISEAL PLUG

SKU: 2437025



## MAPEI - PLANITOP 23

SKU: 2758720



**MAPEI - PLANITOP X**

**SKU:** 2757423



**MAPEI - PLANITOP XS**

**SKU:** 2757323



**MAPEI - RESFOAM 1KM**

**SKU:** 2446120



**MAPEI - RESFOAM HB 45**

**SKU:** 2445958



**MAPEI - RESFOAM HL 35**

**SKU:** 2445619-1



**MAPEI - RESFOAM PF**

**SKU:** 2445419



**MAPEI EPOJET**

**SKU:** 1561144 (399ml) / 1561111KIT (11.35L)



**MEAN CLEAN**

**SKU:** DISTROMEAN5GAL



**NUT SETTER 5/16" NON-MAGNETIC FOR ZERKS**

**SKU:** FU34590402



**NYLON TUBING 1/4" OD**

**SKU:** 40.1140



## PLASTIC BORDER FOR PAVERS

SKU: N/A



## PLASTIC DEEP TRAY - 2L

SKU: ZTR200



## POLYBITUME 570-05

SKU: BK570S664 (300ml) / BK570S686 (850ml) / 694266611003 (10kg)



## RCF EPOXY GUN DUAL CARTRIDGE

SKU: FG20023



## RCF HIGH STRENGTH ANCHORING EPOXY PASTE

SKU: FG20075 (600ml) / FG20177 (2 Gal.)



## RCF STRUCTURAL EPOXY INJECTION RESIN

SKU: FG20076



## REDUCER MALE CONNECTOR 3/8" TO 1/4"

SKU: 32.3382



## REDUCER MALE CONNECTOR 5/16" TO 1/4"

SKU: 32.3370



## ROBUST CAULKING GUN FOR 300ML CARTRIDGES

SKU: 106617



## SPETEC GT350

SKU: 101888



## SPETEC H100

SKU: 101895



## SPETEC PUMP CLEANER

SKU: 103001



## SPETEC SEAL F400

SKU: 101884



## SPLIT FOAM SLEEVE - 9" X 3/4"

SKU: Z9SF20



## STAINLESS STEEL SILICONE FLUID FILLED PRESSURE GAUGE - 0 - 1000 PSI - LM MOUNT

SKU: 62.6670



## STAINLESS STEEL SILICONE FLUID FILLED PRESSURE GAUGE - 0 - 10000 PSI - LM MOUNT

SKU: 62.6695



**STAINLESS STEEL  
SILICONE FLUID FILLED  
PRESSURE GAUGE - 0 -  
4000 PSI - LM MOUNT**

**SKU:** 62.6688



**STOPAQ 2100 AQUASTOP**

**SKU:** 103025



**TAMPICO FIBER BRUSH -  
13" X 1" X 3"**

**SKU:** 95006



**TCT HOLE SAW**

**SKU:** DISTROTCT325



**THIROCO T-60**

**SKU:** T60189



**THIROCO T20 - PLASTIC  
CEMENT**

**SKU:** T20020





## THIROCO T20W - PLASTIC CEMENT - WINTER GRADE

SKU: T20W20



## UNION MALE CONNECTOR 1/4" TO 1/4"

SKU: 32.2158



## WIFI MODULE

SKU: PS-WIFI2



## WINDOW WELLS

SKU: MG1082222

# INDEX

## 1

18" x 22" / 30" Radon-Proof Pit Cover 42

18" x 22" Radon-Proof Pit 42

## 2

20" x 24" Corrugated Pump Cover 42

20" x 24" Corrugated Pump Pit 42

## 3

3" Tee 9

3"/ 4" Male Cap 9

3" Perforated (Type 2) 24

## 4

4" 5" 6" 8" Coupling 11

4" 5" 6" 8" Elbow 22 1/2° 11

4" 5" 6" 8" Elbow 45° 11

4" 5" 6" 8" Tee 11

4" 5" 6" 8" Wye 11

4" 6" 8" 90° Short Radius 11

4" 6" 8" Tee Wye 12

4" 90° Long Radius 12

4" Elbow, 45° 14

4" Perforated (Mega 3) 24

4" Perforated, 3 Hole 27

4" Threaded Plug 14

4" Wye 10

4" Cap, No Thread 13

4" Cleanout Chimney 9

4" Coupling 45

4" Coupling with Stopper 13

4" Elbow, 22 1/2° 13

4" Elbow, 45° 13

4" Elbow, 90° Long Turn 13  
4" Elbow, 90° 9  
4" Female Cap With Clip 9  
4" Female Grate Cap 9  
4" Fitting Cleanout 13  
4" HDPE Pipe to PVC Pipe Adapter 10  
4" Non-Perforated 24  
4" Perforated (Type 2) 24  
4" Perforated, 7 Hole 27  
4" Push Fit Adapter 13  
4" SOLFLO MAX Non-Perforated 24  
4" SOLIFLEX Perforated (Type 3) 24  
4" Tee 14  
4" Tee-Wye 10, 14  
4" Universal Drain Adapter 10  
4" Wye 14  
4" Female-Female Coupler 10

## **A**

Alemite Gasket Repair Kit 16, 45  
Alemite Grease Gun for Polyurethane Injection 16, 45  
Alemite Spring Repair Kit 16  
Aluminum Checker Plate Cover - 18" x 24" 39, 46

## **B**

Backup Combo Pump 43, 46  
Bakor 700-01 6, 46  
Bakor Aqua-Bloc 720-38 36, 46  
Bakor Aqua-Bloc 770-06 33, 46  
Bakor Blueskin Adhesive 29, 46  
Bakor NP180 PP 34, 46  
Bakor Poly Fab 29, 46  
Bakor Polypropylene Protection Board 29, 47  
Bakor Yellow Jacket 29, 47  
Ball Valve 1/8" x 1/8" FF Threaded Both Sides 16, 47  
Box of 50 Professional Black Nitrile Gloves 16  
Brass Fitting Female to Male Pipe Adapter 1/8" Male to 1/4" Female 16, 47  
Brass Fitting Street Tee 1/8" Female with Two 1/8" Female 17, 47

**C**

Cage for Roller - 9 1/2" 4, 29, 47  
Cast Iron Pump 43, 47  
Cast Iron/Plastic/Steel to Cast Iron/Plastic/Steel 15  
Concrete Crack Lock Kit - 20 Pack with High Strength Anchoring Epoxy Paste 28, 47  
Concrete to Cast Iron/Plastic/Steel 15  
Coupler for Injection 17, 48

**D**

Delta Drain 8, 48  
Delta Dry & Lath 8, 48  
Delta Fastner 7, 48  
Delta Mold Strip 7, 48  
Delta MS 8, 48  
Delta Sealant 7, 48  
Delta Vent S 8, 48  
Delta Vent SA 8, 49  
Distrocan - Jet Set 1-3 Min 3, 49  
Distrocan - Jet Set 3-5 Min 3, 49  
Distrocan - Jet Set 5-10 Min 3, 49  
Drain Box - 16" x 16" x 12" 37, 49  
Drain Box - 2' 37, 49  
Drain Box - 4' 37, 49  
Drain Box - 4' x 6" x 12" 37, 49, 50  
Drain Box - 6' 37, 50  
Drain Box - 8' 38, 50  
Dual Cartridge RCF Polyurethane Expanding Foam 21, 50  
Dual Float - Standard Controller 41, 50  
Ductile Iron to Cast Iron/Plastic/Steel 15

**E**

EPICOL T 20, 50

**F**

Flexible Hose for Injection Pump 17, 50  
Floor Drain - 12" x 12" x 12" 39  
Floor Drain - 18" x 24" x 18" 39  
Floor Drain - 18" x 24" x 25" 39

**G**

**GEOMAX** Geogrid 40

**GEOMAX** Geotextile 40, 45

**GEOMAX** Non Woven Geotextile 40, 45

**GEOMAX** Woven Geotextile 40, 45

**H**

Henry 930-18 Poly-TAC 29, 50

Henry Blueskin WP200 32, 51

Henry CM100 35, 51

Hose barb to male pipe connector 1/8" to 1/8" 17, 51

**I**

ImpermaShield R Coat 36, 51

ImpermaShield SD Spray Coat 36, 51

ImpermaShield T Coat 36, 51

Injection Hose Adapter 90° 17, 51

Injection hose adapter Straight 17, 51

Injection Hoses for Grease Guns 18

Injection Packer with Zerk 18, 52

**K**

Kit Bowed Wall Repair Unidirectional Vertical 400gsm 6" x 8' 28, 52

Kit Crack Repair Bidirectional 560GSM 12" x 8' 28, 52

**L**

Landscaping Nails - Spiral 23, 52

Landscaping Nails - Common 23, 52

**M**

Male Connector 1/4" to Thread 1/8" 18, 52

Mapei - Planiseal Plug 52

Mapei - Planitop 23 3, 52

Mapei - Planitop X 3, 53

Mapei - Planitop XS 3, 53

MAPEI - RESFOAM 1KM 21, 53

MAPEI - RESFOAM HB 45 21, 53

MAPEI - RESFOAM HL 35 21, 53

MAPEI - RESFOAM PF 21, 53

Mapei Epojet 20, 53

Mean Clean 30, 53

## **N**

Nut Setter 5/16" Non-Magnetic for Zerks 18, 53

Nylon Tubing 1/4" OD 18, 53

## **P**

Pack of 10 Paint Sleeves 30

Paint Sleeves - Pack of 10 4

Plastic Border for Pavers 23, 54

Plastic Deep Tray - 2L 4, 30, 54

Polybitume 570-05 30, 54

## **R**

RCF Epoxy Gun Dual Cartridge 18, 54

RCF High Strength Anchoring Epoxy Paste 20, 54

RCF Structural Epoxy Injection Resin 20, 54

Reducer Male Connector 3/8" to 1/4" 18, 54

Reducer Male Connector 5/16" to 1/4" 18, 54

Robust Caulking Gun for 300ml Cartridges 30, 55

## **S**

SDR28 26

SDR35 26

SPETEC GEN ACC 21

SPETEC GEN ACC FAST 21

SPETEC GT350 21, 55

SPETEC H100 22, 55

SPETEC PUMP CLEANER 22, 55

SPETEC SEAL F400 22, 55

Split Foam Sleeve - 9" x 3/4" 4, 30, 55

Stainless Steel Silicone Fluid Filled Pressure Gauge - 0 - 1000 PSI - LM Mount 19, 55

Stainless Steel Silicone Fluid Filled Pressure Gauge - 0 - 10000 PSI - LM Mount 19, 55

Stainless Steel Silicone Fluid Filled Pressure Gauge - 0 - 4000 PSI - LM Mount 19, 56

STOPAQ 2100 AQUASTOP 22, 56

Super Industrial Stripping Glove X-Large 31

## **T**

Tampico Fiber Brush - 13" x 1" x 3" 2, 4, 31, 56

TCT Hole Saw 23, 56

Teflon 1/2" x 40' 19

Thiroco T-60 6, 56

Thiroco T20 - Plastic Cement 4, 31, 56

Thiroco T20W - Plastic Cement - Winter Grade 5, 31, 56

## **U**

Union Male Connector 1/4" to 1/4" 19, 56

## **W**

Wifi Module 41, 57

Window Wells 44, 57

18" x 30" Radon-Proof Pit 42