



DSTROCAN  
DSTROCAN  
DSTROCAN  
DSTROCAN  
DSTROCAN

0095600  
22 242018



# CEMENTITIOUS PRODUCTS

## ACCESSORIES



**TAMPICO FIBER BRUSH  
WHITE 13" X 1" X 3"**

**SKU:** 95006

## MORTARS



### **DISTROCAN JETSET 1-3 MIN**

**SKU:** JETSET13



### **DISTROCAN JETSET 3-5 MIN**

**SKU:** JETSET35



### **DISTROCAN JETSET 5-10 MIN**

**SKU:** JETSET510



### **MAPEI PLANITOP XS**

**SKU:** 2757323

# DAMP PROOFING PRODUCTS

## SEALERS



**BAKOR 700-01**

**SKU:** BK70001074



# DELTA PRODUCTS

## ACCESSORIES



**DELTA FASTNER**

SKU: N/A



**DELTA MOLD STRIP**

SKU: N/A



**DELTA SEALANT**

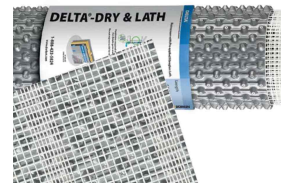
SKU: N/A

# MEMBRANES



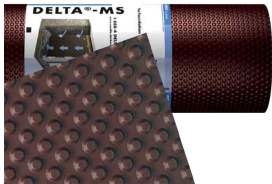
## DELTA-DRAIN

SKU: N/A



## DELTA-DRY & LATH

SKU: N/A



## DELTA-MS

SKU: N/A



## DELTA-VENT S

SKU: N/A



## DELTA-VENT SA

SKU: N/A



# FITTINGS

## HDPE



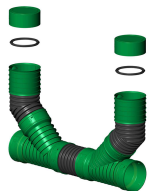
**3" TEE**

SKU: N/A



**3"/ 4" MALE CAP**

SKU: N/A



**4" CLEANOUT CHIMNEY**

SKU: N/A



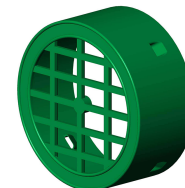
**4" ELBOW, 90°**

SKU: N/A



**4" FEMALE CAP WITH CLIP**

SKU: N/A



**4" FEMALE GRATE CAP**

SKU: N/A



**4" HDPE PIPE TO PVC PIPE  
ADAPTER**

SKU: N/A



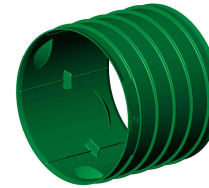
**4" TEE-WYE**

SKU: N/A



**4" UNIVERSAL DRAIN  
ADAPTER**

SKU: N/A



**4" FEMALE-FEMALE  
COUPLER**

SKU: N/A



**4" WYE**

SKU: N/A



## PVC-MUNICIPAL



**4" 5" 6" 8" COUPLING**

SKU: N/A



**4" 5" 6" 8" ELBOW 22 1/2°**

SKU: N/A



**4" 5" 6" 8" ELBOW 45°**

SKU: N/A



**4" 5" 6" 8" ELBOW 45°**

SKU: N/A



**4" 5" 6" 8" TEE**

SKU: N/A



**4" 5" 6" 8" WYE**

SKU: N/A



**4" 6" 8" 90° SHORT RADIUS**

SKU: N/A



**4" 6" 8" 90° SHORT RADIUS**

SKU: N/A



**4" 6" 8" TEE WYE**

**SKU:** N/A



**4" 90° LONG RADIUS**

**SKU:** N/A



## PVC-PLUMBING



**4" CAP, NO THREAD**

SKU: N/A



**4" COUPLING WITH STOPPER**

SKU: N/A



**4" ELBOW, 22 1/2°**

SKU: N/A



**4" ELBOW, 45°**

SKU: N/A



**4" ELBOW, 90° LONG TURN**

SKU: N/A



**4" FITTING CLEANOUT**

SKU: N/A



### 4" FITTING CLEANOUT

SKU: N/A



### 4" PUSH FIT ADAPTER

SKU: N/A



### 4" TEE

SKU: N/A



### 4" TEE-WYE

SKU: N/A



### 4" WYE

SKU: N/A



### 4" ELBOW, 45°

SKU: N/A



### 4" THREADED PLUG

SKU: N/A

## RUBBER COUPLINGS



**CAST IRON/PLASTIC/STEEL  
TO CAST  
IRON/PLASTIC/STEEL**

**SKU: N/A**



**CONCRETE TO CAST  
IRON/PLASTIC/STEEL**

**SKU: N/A**



**DUCTILE IRON TO CAST  
IRON/PLASTIC/STEEL**

**SKU: N/A**

# INJECTION PRODUCTS

## ACCESSORIES



### COUPLER FOR INJECTION

SKU: N/A



### FLEXIBLE HOSE FOR INJECTION PUMP

SKU: N/A



### INJECTION PACKER WITH ZERK

SKU: N/A

## POLYURETHANE RESINS



**EPICOL T**

SKU: N/A



**MAPEI - RESFOAM 1KM**

SKU: N/A



**MAPEI - RESFOAM HB 45**

SKU: N/A



**MAPEI - RESFOAM HL 35**

SKU: N/A



**MAPEI - RESFOAM PF**

SKU: N/A



**SPETEC GEN ACC**

SKU: N/A



**SPETEC GEN ACC FAST**

SKU: N/A



**SPETEC GT350**

SKU: N/A





## **SPETEC H100**

**SKU: N/A**



## **SPETEC PUMP CLEANER**

**SKU: N/A**



## **SPETEC SEAL F400**

**SKU: N/A**



## **STOPAQ 2100 AQUASTOP**

**SKU: N/A**

## LANDSCAPING

## ACCESSORIES



### LANDSCAPING NAILS - SPIRAL

SKU: N/A



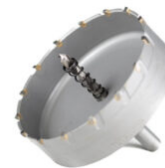
### LANDSCAPING NAILS - COMMON

SKU: N/A



### PLASTIC BORDER FOR PAVERS

SKU: N/A



### TCT HOLE SAW

SKU: N/A

# PIPES

## HDPE



**3" PERFORATED (TYPE 2)**

SKU: N/A



**4" PERFORATED (TYPE 2)**

SKU: N/A



**4" SOLIFLEX PERFORATED (TYPE 3)**

SKU: N/A



**4" NON-PERFORATED**

SKU: N/A



**4" SOLFLO MAX NON-PERFORATED**

SKU: N/A



**4" PERFORATED (MEGA 3)**

SKU: N/A



## PVC-MUNICIPAL



**SDR28**

**SKU:** N/A



**SDR35**

**SKU:** N/A

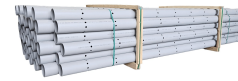


## PVC-PLUMBING



### 4" NON PERFORATED

SKU: N/A



### 4" PERFORATED, 7 HOLE

SKU: N/A



### 4" PERFORATED, 3 HOLE

SKU: N/A

# WATER PROOFING MEMBRANES

## ACCESSORIES



### BAKOR BLUESKIN ADHESIVE

SKU: BK101677



### BAKOR POLY FAB

SKU: BKPF600



### BAKOR POLYPROPYLENE PROTECTION BOARD

SKU: BK99031458



### BAKOR YELLOW JACKET

SKU: BK99006876 (6" x 150') / BK99006875  
(36" x 150')



## CAGE FOR ROLLER 9 1/2"

SKU: ZFR499N



## HENRY 930-18 POLY-TAC

SKU: BK018621



## PACK OF 10 PAINT SLEEVES

SKU: Z9T15-10



## PLASTIC DEEP TRAY 2L

SKU: ZTR200



## POLYBITUME 570-05

SKU: BK570S664 (300ml) / BK570S686 (850ml) / 694266611003 (10kg)



## ROBUST CAULKING GUN FOR 300ML CARTRIDGES

SKU: 106617



## SPLIT FOAM SLEEVE 9" X 3/4'

SKU: Z9SF20



## SUPER INDUSTRIAL STRIPPING GLOVE X-LARGE

SKU: 4003



**TAMPICO FIBER BRUSH  
WHITE 13" X 1" X 3"**

**SKU:** N/A



**THIROCO - T20 - PLASTIC  
CEMENT**

**SKU:** T20020



**THIROCO - T20W PLASTIC  
CEMENT - WINTER GRADE**

**SKU:** T20W20

## SELF-ADHESIVE



**HENRY BLUESKIN WP200**

**SKU:** HEWP200937



## SOLVENT BASED



**BAKOR AQUA-BLOC 770-06**

**SKU:** BK77006070

# THERMOSEALING MEMBRANES



**BAKOR NP180 PP**

**SKU:** BH180PP985

## URETHANE BASED



**HENRY CM100**

**SKU:** HE78060073

## WATER BASED



### BAKOR AQUA-BLOC 720-38

SKU: BK72038074



### IMPERMASHIELD R COAT

SKU: N/A



### IMPERMASHIELD SD SPRAY COAT

SKU: N/A



### IMPERMASHIELD T COAT

SKU: N/A



### MEAN CLEAN

SKU: N/A

## DRAIN BOXES

### GALVANIZED



**1' X 2' DRAIN BOX**

SKU: N/A



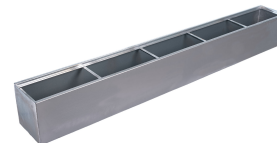
**1' X 4' DRAIN BOX**

SKU: N/A



**1' X 6' DRAIN BOX**

SKU: N/A



**1' X 8' DRAIN BOX**

SKU: N/A



**16" X 16" DRAIN BOX**

SKU: N/A



**6" X 4' DRAIN BOX**

SKU: N/A





## **6" X 8' DRAIN BOX**

**SKU:** N/A

## PLASTIC



**12" X 12" FLOOR DRAIN**

SKU: N/A



**18" X 24" FLOOR DRAIN**

SKU: N/A



**18" X 24" ALUMINUM  
CHECKER PLATE COVER**

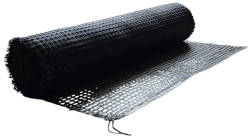
SKU: N/A



**22" X 28" FLOOR DRAIN**

SKU: N/A

# GEOSYNTHETICS



## **GEOMAX** GEOGRID

SKU: N/A



## **GEOMAX** WOVEN GEOTEXTILE

SKU: N/A



## **GEOMAX** NON WOVEN GEOTEXTILE

SKU: N/A

# SUMP PUMP SYSTEMS

## ACCESSORIES



### DUAL FLOAT - DELUXE CONTROLLER

SKU: N/A



### DUAL FLOAT - STANDARD CONTROLLER

SKU: N/A



### TETHER SWITCH - DELUXE CONTROLLER

SKU: N/A



### TETHER SWITCH - NO CONTROLLER

SKU: N/A



## VERTICAL SWITCH - DELUXE CONTROLLER

SKU: N/A



## VERTICAL SWITCH - NO CONTROLLER

SKU: N/A



## WIFI MODULE

SKU: N/A

## PITS



**18" X 30" RADON-PROOF  
PIT**

SKU: N/A



**18" X 22" / 30" RADON-  
PROOF PIT COVER**

SKU: N/A



**18" X 22" RADON-PROOF  
PIT**

SKU: N/A



**20" X 24" CORRUGATED  
PUMP PIT**

SKU: N/A



**20" X 24" CORRUGATED  
PUMP COVER**

SKU: N/A

# PUMPS



## BACKUP COMBO PUMP

SKU: N/A



## CAST IRON PUMP

SKU: N/A



## S SERIES PUMP

SKU: N/A



## ST SERIES PUMP

SKU: N/A

# WINDOW WELLS



## WINDOW WELLS

**SKU:** N/A



## ALL PRODUCTS



**GEOMAX WOVEN  
GEOTEXTILE**

SKU: N/A



**GEOMAX NON WOVEN  
GEOTEXTILE**

SKU: N/A



**1' X 2' DRAIN BOX**

SKU: N/A



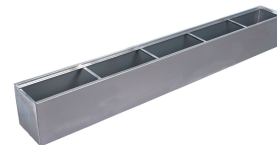
**1' X 4' DRAIN BOX**

SKU: N/A



**1' X 6' DRAIN BOX**

SKU: N/A



**1' X 8' DRAIN BOX**

SKU: N/A



### 16" X 16" DRAIN BOX

SKU: N/A



### 18" X 24" ALUMINUM CHECKER PLATE COVER

SKU: N/A



### 4" COUPLING

SKU: N/A



### 6" X 4' DRAIN BOX

SKU: N/A



### 6" X 8' DRAIN BOX

SKU: N/A



### BACKUP COMBO PUMP

SKU: N/A



### BAKOR 700-01

SKU: BK70001074



### BAKOR AQUA-BLOC 720-38

SKU: BK72038074



## BAKOR AQUA-BLOC 770-06

SKU: BK77006070



## BAKOR BLUESKIN ADHESIVE

SKU: BK101677



## BAKOR NP180 PP

SKU: BH180PP985



## BAKOR POLY FAB

SKU: BKPF600



## BAKOR POLYPROPYLENE PROTECTION BOARD

SKU: BK99031458



## BAKOR YELLOW JACKET

SKU: BK99006876 (6" x 150') / BK99006875 (36" x 150')



## CAGE FOR ROLLER 9 1/2"

SKU: ZFR499N



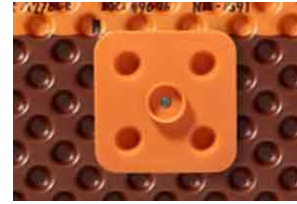
## CAST IRON PUMP

SKU: N/A



## COUPLER FOR INJECTION

SKU: N/A



## DELTA FASTNER

SKU: N/A



## DELTA MOLD STRIP

SKU: N/A



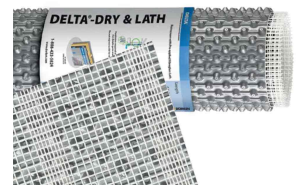
## DELTA SEALANT

SKU: N/A



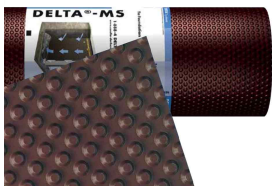
## DELTA-DRAIN

SKU: N/A



## DELTA-DRY & LATH

SKU: N/A



## DELTA-MS

SKU: N/A



## DELTA-VENT S

SKU: N/A



## DELTA-VENT SA

SKU: N/A



## DISTROCAN JETSET 1-3 MIN

SKU: JETSET13



## **DISTROCAN JETSET 3-5 MIN**

**SKU:** JETSET35



## **DISTROCAN JETSET 5-10 MIN**

**SKU:** JETSET510



## **DUAL FLOAT - DELUXE CONTROLLER**

**SKU:** N/A



## **DUAL FLOAT - STANDARD CONTROLLER**

**SKU:** N/A



## **EPICOL T**

**SKU:** N/A



## **FLEXIBLE HOSE FOR INJECTION PUMP**

**SKU:** N/A



## **HENRY 930-18 POLY-TAC**

**SKU:** BK018621



## **HENRY BLUESKIN WP200**

**SKU:** HEWP200937



## HENRY CM100

SKU: HE78060073



## IMPERMASHIELD R COAT

SKU: N/A



## IMPERMASHIELD SD SPRAY COAT

SKU: N/A



## IMPERMASHIELD T COAT

SKU: N/A



## INJECTION PACKER WITH ZERK

SKU: N/A



## LANDSCAPING NAILS - SPIRAL

SKU: N/A



## LANDSCAPING NAILS - COMMON

SKU: N/A



## MAPEI - PLANISEAL PLUG

SKU: N/A



**MAPEI - PLANITOP 23**

SKU: N/A



**MAPEI - PLANITOP X**

SKU: N/A



**MAPEI - RESFOAM 1KM**

SKU: N/A



**MAPEI - RESFOAM HB 45**

SKU: N/A



**MAPEI - RESFOAM HL 35**

SKU: N/A



**MAPEI - RESFOAM PF**

SKU: N/A



**MAPEI PLANITOP XS**

SKU: 2757323



**MEAN CLEAN**

SKU: N/A



**PLASTIC BORDER FOR PAVERS**

SKU: N/A



**PLASTIC DEEP TRAY 2L**

SKU: ZTR200



## POLYBITUME 570-05

**SKU:** BK570S664 (300ml) / BK570S686 (850ml) / 694266611003 (10kg)



## ROBUST CAULKING GUN FOR 300ML CARTRIDGES

**SKU:** 106617



## S SERIES PUMP

**SKU:** N/A



## SPETEC GT350

**SKU:** N/A



## SPETEC H100

**SKU:** N/A



## SPETEC PUMP CLEANER

**SKU:** N/A



## SPETEC SEAL F400

**SKU:** N/A



## SPLIT FOAM SLEEVE 9" X 3/4'

**SKU:** Z9SF20





## ST SERIES PUMP

SKU: N/A



## STOPAQ 2100 AQUASTOP

SKU: N/A



## TAMPICO FIBER BRUSH WHITE 13" X 1" X 3"

SKU: 95006



## TCT HOLE SAW

SKU: N/A



## TETHER SWITCH - DELUXE CONTROLLER

SKU: N/A



## TETHER SWITCH - NO CONTROLLER

SKU: N/A



## THIROCO - T20W PLASTIC CEMENT - WINTER GRADE

SKU: T20W20



## VERTICAL SWITCH - DELUXE CONTROLLER

SKU: N/A



## VERTICAL SWITCH - NO CONTROLLER

SKU: N/A



## WIFI MODULE

SKU: N/A



## WINDOW WELLS

SKU: N/A

# INDEX

## 1

12" x 12" Floor Drain 32  
16" x 16" Drain Box 30, 39  
18" x 24" Aluminum Checker Plate Cover 32, 39  
18" x 22" / 30" Radon-Proof Pit Cover 36  
18" x 22" Radon-Proof Pit 36  
18" x 24" Floor Drain 32  
1' x 2' Drain Box 30, 39  
1' x 4' Drain Box 30, 39  
1' x 6' Drain Box 30, 39  
1' x 8' Drain Box 30, 39

## 2

20" x 24" Corrugated Pump Cover 36  
20" x 24" Corrugated Pump Pit 36  
22" x 28" Floor Drain 32

## 3

3" Tee 7  
3"/ 4" Male Cap 7  
3" Perforated (Type 2) 18

## 4

4" 5" 6" 8" Coupling 9  
4" 5" 6" 8" Elbow 22 1/2° 9  
4" 5" 6" 8" Elbow 45° 9  
4" 5" 6" 8" Tee 9  
4" 5" 6" 8" Wye 9  
4" 6" 8" 90° Short Radius 9  
4" 6" 8" Tee Wye 10  
4" 90° Long Radius 10  
4" Elbow, 45° 12  
4" Perforated (Mega 3) 18

4" Perforated, 3 Hole 21  
4" Threaded Plug 12  
4" Wye 8  
4" Cap, No Thread 11  
4" Cleanout Chimney 7  
4" Coupling 40  
4" Coupling with Stopper 11  
4" Elbow, 22 1/2° 11  
4" Elbow, 45° 11  
4" Elbow, 90° Long Turn 11  
4" Elbow, 90° 7  
4" Female Cap With Clip 7  
4" Female Grate Cap 7  
4" Fitting Cleanout 11  
4" HDPE Pipe to PVC Pipe Adapter 8  
4" Non Perforated 21  
4" Non-Perforated 18  
4" Perforated (Type 2) 18  
4" Perforated, 7 Hole 21  
4" Push Fit Adapter 11  
4" SOLFLO MAX Non-Perforated 18  
4" SOLIFLEX Perforated (Type 3) 18  
4" Tee 12  
4" Tee-Wye 8, 12  
4" Universal Drain Adapter 8  
4" Wye 12  
4" Female-Female Coupler 8

## **6**

6" x 4' Drain Box 30, 40  
6" x 8' Drain Box 31, 40

## **B**

Backup Combo Pump 37, 40  
Bakor 700-01 4, 40  
Bakor Aqua-Bloc 720-38 29, 40  
Bakor Aqua-Bloc 770-06 26, 40  
Bakor Blueskin Adhesive 22, 40  
Bakor NP180 PP 27, 41

Bakor Poly Fab 22, 41  
Bakor Polypropylene Protection Board 22, 41  
Bakor Yellow Jacket 22, 41

## C

Cage for Roller 9 1/2" 22, 41  
Cast Iron Pump 37, 41  
Cast Iron/Plastic/Steel to Cast Iron/Plastic/Steel 13  
Concrete to Cast Iron/Plastic/Steel 13  
Coupler for Injection 14, 41

## D

Delta Fastner 5, 41  
Delta Mold Strip 5, 42  
Delta Sealant 5, 42  
Delta-Drain 6, 42  
Delta-Dry & Lath 6, 42  
Delta-MS 6, 42  
Delta-Vent S 6, 42  
Delta-Vent SA 6, 42  
Distrocan JETSET 1-3 Min 3, 42  
Distrocan JetSet 3-5 Min 3, 43  
Distrocan JetSet 5-10 Min 3, 43  
Dual Float - Deluxe Controller 34, 43  
Dual Float - Standard Controller 34, 43  
Ductile Iron to Cast Iron/Plastic/Steel 13

## E

EPICOL T 15, 43

## F

Flexible Hose for Injection Pump 14, 43

## G

**GEOMAX** Geogrid 33  
**GEOMAX** Non Woven Geotextile 33, 39  
**GEOMAX** Woven Geotextile 33, 39

**H**

Henry 930-18 Poly-TAC 22, 43  
Henry Blueskin WP200 25, 43  
Henry CM100 28, 44

**I**

ImpermaShield R Coat 29, 44  
ImpermaShield SD Spray Coat 29, 44  
ImpermaShield T Coat 29, 44  
Injection Packer with Zerk 14, 44

**L**

Landscaping Nails - Spiral 17, 44  
Landscaping Nails - Common 17, 44

**M**

MAPEI - PlaniSeal Plug 44  
MAPEI - PlaniTop 23 45  
MAPEI - Planitop X 45  
MAPEI - RESFOAM 1KM 15, 45  
MAPEI - RESFOAM HB 45 15, 45  
MAPEI - RESFOAM HL 35 15, 45  
MAPEI - RESFOAM PF 15, 45  
Mapei Planitop XS 3, 45  
Mean Clean 29, 45

**P**

Pack of 10 Paint Sleeves 23  
Plastic Border for Pavers 17, 45  
Plastic Deep Tray 2L 23, 45  
Polybitume 570-05 23, 46

**R**

Robust Caulking Gun for 300ml Cartridges 23, 46

**S**

S Series Pump 37, 46  
SDR28 20  
SDR35 20

SPETEC GEN ACC 15  
SPETEC GEN ACC FAST 15  
SPETEC GT350 15, 46  
SPETEC H100 16, 46  
SPETEC PUMP CLEANER 16, 46  
SPETEC SEAL F400 16, 46  
Split Foam Sleeve 9" x 3/4' 23, 46  
ST Series Pump 37, 47  
STOPAQ 2100 AQUASTOP 16, 47  
Super Industrial Stripping Glove X-Large 23

## **T**

Tampico Fiber Brush White 13" x 1" x 3" 2, 24, 47  
TCT Hole Saw 17, 47  
Tether Switch - Deluxe Controller 34, 47  
Tether Switch - No Controller 34, 47  
Thiroco - T20 - Plastic Cement 24  
Thiroco - T20W Plastic Cement - Winter Grade 24, 47

## **V**

Vertical Switch - Deluxe Controller 34, 47  
Vertical Switch - No Controller 34, 48

## **W**

Wifi Module 35, 48  
Window Wells 38, 48

18" x 30" Radon-Proof Pit 36