



DSTROCAN
DSTROCAN
DSTROCAN
DSTROCAN
DSTROCAN

0095600
22 242018
M095600

CEMENTITIOUS PRODUCTS

ACCESSORIES



**TAMPICO FIBER BRUSH
WHITE 13" X 1" X 3"**

SKU: 95006

MORTARS



DISTROCAN JETSET 1-3 MIN

SKU: JETSET13



DISTROCAN JETSET 3-5 MIN

SKU: JETSET35



DISTROCAN JETSET 5-10 MIN

SKU: JETSET510



MAPEI PLANITOP XS

SKU: 2757323

DAMP PROOFING PRODUCTS

SEALERS



BAKOR 700-01

SKU: BK70001074

DELTA PRODUCTS

ACCESSORIES



DELTA FASTNER

SKU: N/A



DELTA MOLD STRIP

SKU: N/A



DELTA SEALANT

SKU: N/A

MEMBRANES



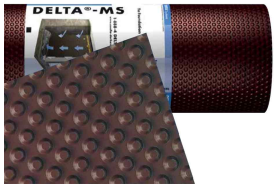
DELTA-DRAIN

SKU: N/A



DELTA-DRY & LATH

SKU: N/A



DELTA-MS

SKU: N/A



DELTA-VENT S

SKU: N/A



DELTA-VENT SA

SKU: N/A

FITTINGS

HDPE



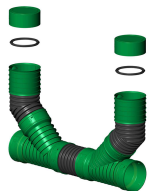
3" TEE

SKU: N/A



3"/ 4" MALE CAP

SKU: N/A



4" CLEANOUT CHIMNEY

SKU: N/A



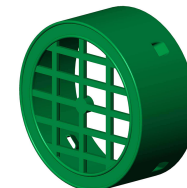
4" ELBOW, 90°

SKU: N/A



4" FEMALE CAP WITH CLIP

SKU: N/A



4" FEMALE GRATE CAP

SKU: N/A



4" HDPE PIPE TO PVC PIPE ADAPTER

SKU: N/A



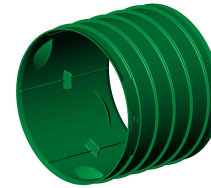
4" TEE-WYE

SKU: N/A



4" UNIVERSAL DRAIN ADAPTER

SKU: N/A



4" FEMALE-FEMALE COUPLER

SKU: N/A



4" WYE

SKU: N/A

PVC-MUNICIPAL



4" 5" 6" 8" COUPLING

SKU: N/A



4" 5" 6" 8" ELBOW 22 1/2°

SKU: N/A



4" 5" 6" 8" ELBOW 45°

SKU: N/A



4" 5" 6" 8" ELBOW 45°

SKU: N/A



4" 5" 6" 8" TEE

SKU: N/A



4" 5" 6" 8" WYE

SKU: N/A



**4" 6" 8" 90° SHORT
RADIUS**

SKU: N/A



**4" 6" 8" 90° SHORT
RADIUS**

SKU: N/A



4" 6" 8" TEE WYE

SKU: N/A



4" 90° LONG RADIUS

SKU: N/A

PVC-PLUMBING



4" CAP, NO THREAD

SKU: N/A



4" COUPLING WITH STOPPER

SKU: N/A



4" ELBOW, 22 1/2°

SKU: N/A



4" ELBOW, 45°

SKU: N/A



4" ELBOW, 90° LONG TURN

SKU: N/A



4" FITTING CLEANOUT

SKU: N/A



4" FITTING CLEANOUT

SKU: N/A



4" PUSH FIT ADAPTER

SKU: N/A



4" TEE

SKU: N/A



4" TEE-WYE

SKU: N/A



4" WYE

SKU: N/A



4" ELBOW, 45°

SKU: N/A



4" THREADED PLUG

SKU: N/A

RUBBER COUPLINGS



**CAST IRON/PLASTIC/STEEL
TO CAST
IRON/PLASTIC/STEEL**

SKU: N/A



**CONCRETE TO CAST
IRON/PLASTIC/STEEL**

SKU: N/A



**DUCTILE IRON TO CAST
IRON/PLASTIC/STEEL**

SKU: N/A

INJECTION PRODUCTS

ACCESSORIES



COUPLER FOR INJECTION

SKU: N/A



FLEXIBLE HOSE FOR INJECTION PUMP

SKU: N/A



INJECTION PACKER WITH ZERK

SKU: N/A

POLYURETHANE RESINS



EPICOL T

SKU: N/A



MAPEI - RESFOAM 1KM

SKU: N/A



MAPEI - RESFOAM HB 45

SKU: N/A



MAPEI - RESFOAM HL 35

SKU: N/A



MAPEI - RESFOAM PF

SKU: N/A



SPETEC GEN ACC

SKU: N/A



SPETEC GEN ACC FAST

SKU: N/A



SPETEC GT350

SKU: N/A



SPETEC H100

SKU: N/A



SPETEC PUMP CLEANER

SKU: N/A



SPETEC SEAL F400

SKU: N/A



STOPAQ 2100 AQUASTOP

SKU: N/A

LANDSCAPING

ACCESSORIES



LANDSCAPING NAILS - SPIRAL

SKU: N/A



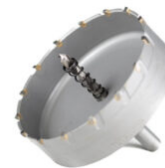
LANDSCAPING NAILS - COMMON

SKU: N/A



PLASTIC BORDER FOR PAVERS

SKU: N/A



TCT HOLE SAW

SKU: N/A

PIPES

HDPE



3" PERFORATED (TYPE 2)

SKU: N/A



4" PERFORATED (TYPE 2)

SKU: N/A



4" SOLIFLEX PERFORATED (TYPE 3)

SKU: N/A



4" NON-PERFORATED

SKU: N/A



4" SOLFLO MAX NON-PERFORATED

SKU: N/A



4" PERFORATED (MEGA 3)

SKU: N/A

PVC-MUNICIPAL



SDR28

SKU: N/A



SDR35

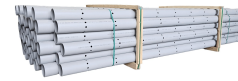
SKU: N/A

PVC-PLUMBING



4" NON PERFORATED

SKU: N/A



4" PERFORATED, 7 HOLE

SKU: N/A



4" PERFORATED, 3 HOLE

SKU: N/A

WATER PROOFING MEMBRANES

ACCESSORIES



BAKOR BLUESKIN ADHESIVE

SKU: BK101677



BAKOR POLY FAB

SKU: BKPF600



BAKOR POLYPROPYLENE PROTECTION BOARD

SKU: BK99031458



BAKOR YELLOW JACKET

SKU: BK99006876 (6'' x 150') / BK99006875
(36'' x 150')



CAGE FOR ROLLER 9 1/2"

SKU: ZFR499N



HENRY 930-18 POLY-TAC

SKU: BK018621



PACK OF 10 PAINT SLEEVES

SKU: Z9T15-10



PLASTIC DEEP TRAY 2L

SKU: ZTR200



POLYBITUME 570-05

SKU: BK570S664 (300ml) / BK570S686 (850ml) / 694266611003 (10kg)



ROBUST CAULKING GUN FOR 300ML CARTRIDGES

SKU: 106617



SPLIT FOAM SLEEVE 9" X 3/4'

SKU: Z9SF20



SUPER INDUSTRIAL STRIPPING GLOVE X-LARGE

SKU: 4003



**TAMPICO FIBER BRUSH
WHITE 13" X 1" X 3"**

SKU: N/A



**THIROCO - T20 - PLASTIC
CEMENT**

SKU: T20020



**THIROCO - T20W PLASTIC
CEMENT - WINTER GRADE**

SKU: T20W20

SELF-ADHESIVE



HENRY BLUESKIN WP200

SKU: HEWP200937

SOLVENT BASED



BAKOR AQUA-BLOC 770-06

SKU: BK77006070

THERMOSEALING MEMBRANES



BAKOR NP180 PP

SKU: BH180PP985

URETHANE BASED



HENRY CM100

SKU: HE78060073

WATER BASED



BAKOR AQUA-BLOC 720-38

SKU: BK72038074



IMPERMASHIELD R COAT

SKU: N/A



IMPERMASHIELD SD SPRAY COAT

SKU: N/A



IMPERMASHIELD T COAT

SKU: N/A



MEAN CLEAN

SKU: N/A

DRAIN BOXES

GALVANIZED



1' X 2' DRAIN BOX

SKU: N/A



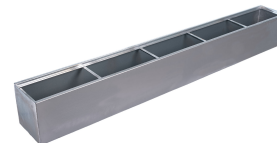
1' X 4' DRAIN BOX

SKU: N/A



1' X 6' DRAIN BOX

SKU: N/A



1' X 8' DRAIN BOX

SKU: N/A



16'' X 16'' DRAIN BOX

SKU: N/A



6'' X 4' DRAIN BOX

SKU: N/A



6" X 8' DRAIN BOX

SKU: N/A

PLASTIC



12" X 12" FLOOR DRAIN

SKU: N/A



18" X 24" FLOOR DRAIN

SKU: N/A



**18" X 24" ALUMINUM
CHECKER PLATE COVER**

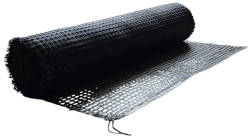
SKU: N/A



22" X 28" FLOOR DRAIN

SKU: N/A

GEOSYNTHETICS



GEOMAX GEOGRID

SKU: N/A



GEOMAX WOVEN GEOTEXTILE

SKU: N/A



GEOMAX NON WOVEN GEOTEXTILE

SKU: N/A

SUMP PUMP SYSTEMS

ACCESSORIES



DUAL FLOAT - DELUXE CONTROLLER

SKU: N/A



DUAL FLOAT - STANDARD CONTROLLER

SKU: N/A



TETHER SWITCH - DELUXE CONTROLLER

SKU: N/A



TETHER SWITCH - NO CONTROLLER

SKU: N/A



VERTICAL SWITCH - DELUXE CONTROLLER

SKU: N/A



VERTICAL SWITCH - NO CONTROLLER

SKU: N/A



WIFI MODULE

SKU: N/A

PITS



**18" X 30" RADON-PROOF
PIT**

SKU: N/A



**18" X 22" / 30" RADON-
PROOF PIT COVER**

SKU: N/A



**18" X 22" RADON-PROOF
PIT**

SKU: N/A



**20" X 24" CORRUGATED
PUMP PIT**

SKU: N/A



**20" X 24" CORRUGATED
PUMP COVER**

SKU: N/A

PUMPS



BACKUP COMBO PUMP

SKU: N/A



CAST IRON PUMP

SKU: N/A



S SERIES PUMP

SKU: N/A



ST SERIES PUMP

SKU: N/A

WINDOW WELLS



WINDOW WELLS

SKU: N/A

ALL PRODUCTS



**GEOMAX WOVEN
GEOTEXTILE**

SKU: N/A



**GEOMAX NON WOVEN
GEOTEXTILE**

SKU: N/A



1' X 2' DRAIN BOX

SKU: N/A



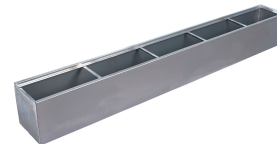
1' X 4' DRAIN BOX

SKU: N/A



1' X 6' DRAIN BOX

SKU: N/A



1' X 8' DRAIN BOX

SKU: N/A



16" X 16" DRAIN BOX

SKU: N/A



18" X 24" ALUMINUM CHECKER PLATE COVER

SKU: N/A



4" COUPLING

SKU: N/A



6" X 4' DRAIN BOX

SKU: N/A



6" X 8' DRAIN BOX

SKU: N/A



BACKUP COMBO PUMP

SKU: N/A



BAKOR 700-01

SKU: BK70001074



BAKOR AQUA-BLOC 720-38

SKU: BK72038074



BAKOR AQUA-BLOC 770-06

SKU: BK77006070



BAKOR BLUESKIN ADHESIVE

SKU: BK101677



BAKOR NP180 PP

SKU: BH180PP985



BAKOR POLY FAB

SKU: BKPF600



BAKOR POLYPROPYLENE PROTECTION BOARD

SKU: BK99031458



BAKOR YELLOW JACKET

SKU: BK99006876 (6'' x 150') / BK99006875 (36'' x 150')



CAGE FOR ROLLER 9 1/2''

SKU: ZFR499N



CAST IRON PUMP

SKU: N/A



COUPLER FOR INJECTION

SKU: N/A



DELTA FASTNER

SKU: N/A



DELTA MOLD STRIP

SKU: N/A



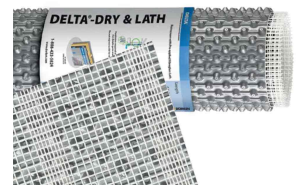
DELTA SEALANT

SKU: N/A



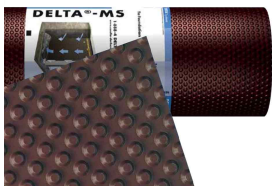
DELTA-DRAIN

SKU: N/A



DELTA-DRY & LATH

SKU: N/A



DELTA-MS

SKU: N/A



DELTA-VENT S

SKU: N/A



DELTA-VENT SA

SKU: N/A



DISTROCAN JETSET 1-3 MIN

SKU: JETSET13



DISTROCAN JETSET 3-5 MIN

SKU: JETSET35



DISTROCAN JETSET 5-10 MIN

SKU: JETSET510



DUAL FLOAT - DELUXE CONTROLLER

SKU: N/A



DUAL FLOAT - STANDARD CONTROLLER

SKU: N/A



EPICOL T

SKU: N/A



FLEXIBLE HOSE FOR INJECTION PUMP

SKU: N/A



HENRY 930-18 POLY-TAC

SKU: BK018621



HENRY BLUESKIN WP200

SKU: HEWP200937



HENRY CM100

SKU: HE78060073



IMPERMASHIELD R COAT

SKU: N/A



IMPERMASHIELD SD SPRAY COAT

SKU: N/A



IMPERMASHIELD T COAT

SKU: N/A



INJECTION PACKER WITH ZERK

SKU: N/A



LANDSCAPING NAILS - SPIRAL

SKU: N/A



LANDSCAPING NAILS - COMMON

SKU: N/A



MAPEI - PLANISEAL PLUG

SKU: N/A



MAPEI - PLANITOP 23

SKU: N/A



MAPEI - PLANITOP X

SKU: N/A



MAPEI - RESFOAM 1KM

SKU: N/A



MAPEI - RESFOAM HB 45

SKU: N/A



MAPEI - RESFOAM HL 35

SKU: N/A



MAPEI - RESFOAM PF

SKU: N/A



MAPEI PLANITOP XS

SKU: 2757323



MEAN CLEAN

SKU: N/A



PLASTIC BORDER FOR PAVERS

SKU: N/A



PLASTIC DEEP TRAY 2L

SKU: ZTR200



POLYBITUME 570-05

SKU: BK570S664 (300ml) / BK570S686 (850ml) / 694266611003 (10kg)



ROBUST CAULKING GUN FOR 300ML CARTRIDGES

SKU: 106617



S SERIES PUMP

SKU: N/A



SPETEC GT350

SKU: N/A



SPETEC H100

SKU: N/A



SPETEC PUMP CLEANER

SKU: N/A



SPETEC SEAL F400

SKU: N/A



SPLIT FOAM SLEEVE 9" X 3/4'

SKU: Z9SF20



ST SERIES PUMP

SKU: N/A



STOPAQ 2100 AQUASTOP

SKU: N/A



TAMPICO FIBER BRUSH WHITE 13" X 1" X 3"

SKU: 95006



TCT HOLE SAW

SKU: N/A



TETHER SWITCH - DELUXE CONTROLLER

SKU: N/A



TETHER SWITCH - NO CONTROLLER

SKU: N/A



THIROCO - T20W PLASTIC CEMENT - WINTER GRADE

SKU: T20W20



VERTICAL SWITCH - DELUXE CONTROLLER

SKU: N/A



VERTICAL SWITCH - NO CONTROLLER

SKU: N/A



WIFI MODULE

SKU: N/A



WINDOW WELLS

SKU: N/A

INDEX

1

12" x 12" Floor Drain 32
16" x 16" Drain Box 30, 39
18" x 24" Aluminum Checker Plate Cover 32, 39
18" x 22" / 30" Radon-Proof Pit Cover 36
18" x 22" Radon-Proof Pit 36
18" x 24" Floor Drain 32
1' x 2' Drain Box 30, 39
1' x 4' Drain Box 30, 39
1' x 6' Drain Box 30, 39
1' x 8' Drain Box 30, 39

2

20" x 24" Corrugated Pump Cover 36
20" x 24" Corrugated Pump Pit 36
22" x 28" Floor Drain 32

3

3" Tee 7
3"/ 4" Male Cap 7
3" Perforated (Type 2) 18

4

4" 5" 6" 8" Coupling 9
4" 5" 6" 8" Elbow 22 1/2° 9
4" 5" 6" 8" Elbow 45° 9
4" 5" 6" 8" Tee 9
4" 5" 6" 8" Wye 9
4" 6" 8" 90° Short Radius 9
4" 6" 8" Tee Wye 10
4" 90° Long Radius 10
4" Elbow, 45° 12
4" Perforated (Mega 3) 18

4" Perforated, 3 Hole 21
4" Threaded Plug 12
4" Wye 8
4" Cap, No Thread 11
4" Cleanout Chimney 7
4" Coupling 40
4" Coupling with Stopper 11
4" Elbow, 22 1/2° 11
4" Elbow, 45° 11
4" Elbow, 90° Long Turn 11
4" Elbow, 90° 7
4" Female Cap With Clip 7
4" Female Grate Cap 7
4" Fitting Cleanout 11
4" HDPE Pipe to PVC Pipe Adapter 8
4" Non Perforated 21
4" Non-Perforated 18
4" Perforated (Type 2) 18
4" Perforated, 7 Hole 21
4" Push Fit Adapter 11
4" SOLFLO MAX Non-Perforated 18
4" SOLIFLEX Perforated (Type 3) 18
4" Tee 12
4" Tee-Wye 8, 12
4" Universal Drain Adapter 8
4" Wye 12
4" Female-Female Coupler 8

6

6" x 4' Drain Box 30, 40
6" x 8' Drain Box 31, 40

B

Backup Combo Pump 37, 40
Bakor 700-01 4, 40
Bakor Aqua-Bloc 720-38 29, 40
Bakor Aqua-Bloc 770-06 26, 40
Bakor Blueskin Adhesive 22, 40
Bakor NP180 PP 27, 41

Bakor Poly Fab 22, 41
Bakor Polypropylene Protection Board 22, 41
Bakor Yellow Jacket 22, 41

C

Cage for Roller 9 1/2" 22, 41
Cast Iron Pump 37, 41
Cast Iron/Plastic/Steel to Cast Iron/Plastic/Steel 13
Concrete to Cast Iron/Plastic/Steel 13
Coupler for Injection 14, 41

D

Delta Fastner 5, 41
Delta Mold Strip 5, 42
Delta Sealant 5, 42
Delta-Drain 6, 42
Delta-Dry & Lath 6, 42
Delta-MS 6, 42
Delta-Vent S 6, 42
Delta-Vent SA 6, 42
Distrocan JETSET 1-3 Min 3, 42
Distrocan JetSet 3-5 Min 3, 43
Distrocan JetSet 5-10 Min 3, 43
Dual Float - Deluxe Controller 34, 43
Dual Float - Standard Controller 34, 43
Ductile Iron to Cast Iron/Plastic/Steel 13

E

EPICOL T 15, 43

F

Flexible Hose for Injection Pump 14, 43

G

GEOMAX Geogrid 33
GEOMAX Non Woven Geotextile 33, 39
GEOMAX Woven Geotextile 33, 39

H

Henry 930-18 Poly-TAC 22, 43
Henry Blueskin WP200 25, 43
Henry CM100 28, 44

I

ImpermaShield R Coat 29, 44
ImpermaShield SD Spray Coat 29, 44
ImpermaShield T Coat 29, 44
Injection Packer with Zerk 14, 44

L

Landscaping Nails - Spiral 17, 44
Landscaping Nails - Common 17, 44

M

MAPEI - PlaniSeal Plug 44
MAPEI - PlaniTop 23 45
MAPEI - Planitop X 45
MAPEI - RESFOAM 1KM 15, 45
MAPEI - RESFOAM HB 45 15, 45
MAPEI - RESFOAM HL 35 15, 45
MAPEI - RESFOAM PF 15, 45
Mapei Planitop XS 3, 45
Mean Clean 29, 45

P

Pack of 10 Paint Sleeves 23
Plastic Border for Pavers 17, 45
Plastic Deep Tray 2L 23, 45
Polybitume 570-05 23, 46

R

Robust Caulking Gun for 300ml Cartridges 23, 46

S

S Series Pump 37, 46
SDR28 20
SDR35 20

SPETEC GEN ACC 15
SPETEC GEN ACC FAST 15
SPETEC GT350 15, 46
SPETEC H100 16, 46
SPETEC PUMP CLEANER 16, 46
SPETEC SEAL F400 16, 46
Split Foam Sleeve 9" x 3/4' 23, 46
ST Series Pump 37, 47
STOPAQ 2100 AQUASTOP 16, 47
Super Industrial Stripping Glove X-Large 23

T

Tampico Fiber Brush White 13" x 1" x 3" 2, 24, 47
TCT Hole Saw 17, 47
Tether Switch - Deluxe Controller 34, 47
Tether Switch - No Controller 34, 47
Thiroco - T20 - Plastic Cement 24
Thiroco - T20W Plastic Cement - Winter Grade 24, 47

V

Vertical Switch - Deluxe Controller 34, 47
Vertical Switch - No Controller 34, 48

W

Wifi Module 35, 48
Window Wells 38, 48

18" x 30" Radon-Proof Pit 36