



DISTROCAN



CATALOGUE DE PRODUIT

2025

333 St-Hubert, Laval, QC, H7G2Y5
1-800-619-0916 • info@distrocan.ca

distrocan.ca

ALL PRODUCTS



GEOMAX WOVEN GEOTEXTILE

SKU: GEOMAXW13350



GEOMAX GEOTEXTILE

SKU: GNT12350 GNT3350 GNT6350



GEOMAX NON WOVEN GEOTEXTILE

SKU: GNT12350 / GNT3350 / GNT6350



4" COUPLING

SKU: 1M0040



ALEMITE GASKET REPAIR KIT

SKU: 336523



ALEMITE GREASE GUN FOR POLYURETHANE INJECTION

SKU: 586-B



ALUMINUM CHECKER PLATE COVER - 18" X 24"

SKU: CA1824



BACKUP COMBO PUMP

SKU: PSC22



BAKOR 700-01

SKU: BK70001074



BAKOR AQUA-BLOC 720-38

SKU: BK72038074



BAKOR AQUA-BLOC 770-06

SKU: BK77006070



BAKOR BLUESKIN ADHESIVE

SKU: BK101677



BAKOR NP180 PP

SKU: BH180PP985



BAKOR POLY FAB

SKU: BKPF600



BAKOR POLYPROPYLENE PROTECTION BOARD

SKU: BK99031458



BAKOR YELLOW JACKET

SKU: BK99006876 (6" x 150') / BK99006875 (36" x 150')



BALL VALVE 1/8" X 1/8" FF THREADED BOTH SIDES

SKU: 14.1102



BRASS FITTING FEMALE TO MALE PIPE ADAPTER 1/8" MALE TO 1/4" FEMALE

SKU: 33.1912



BRASS FITTING STREET TEE 1/8" FEMALE WITH TWO 1/8" FEMALE

SKU: 33.3410



CAGE FOR ROLLER - 9 1/2"

SKU: ZFR499N



CAST IRON PUMP

SKU: N/A

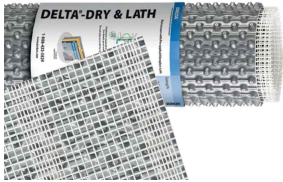


CONCRETE CRACK LOCK KIT - 20 PACK WITH HIGH STRENGTH ANCHORING



COUPLER FOR INJECTION

SKU: DISTROCOUPRED



DELTA DRY & LATH

SKU: N/A



DELTA MOLD STRIP

SKU: 22610021



DELTA SEALANT

SKU: 22610015



EPOXY PASTE

SKU: FG20040

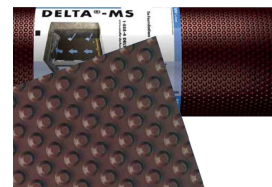
DELTA DRAIN

SKU: 22600014 / 22600015



DELTA FASTNER

SKU: 22610005 / 22610006



DELTA MS

SKU: 22600001 / 22600002 / 22600003 / 22600004 / 22600005 / 22600006



DELTA VENT S

SKU: N/A



DELTA VENT SA

SKU: N/A



DISTROCAN - JET SET 1-3 MIN

SKU: JETSET13



DISTROCAN - JET SET 3-5 MIN

SKU: JETSET35



DISTROCAN - JET SET 5-10 MIN

SKU: JETSET510



DRAIN BOX - 16" X 16" X 12"

SKU: DBG1616



DRAIN BOX - 2'

SKU: CP24-12-12



DRAIN BOX - 4'

SKU: CP48-12-12



DRAIN BOX - 4' X 6" X 12"

SKU: DBG48-6-12



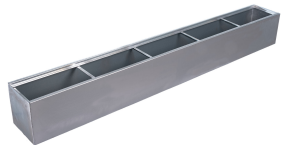
DRAIN BOX - 4' X 6" X 12"

SKU: DBG96-6-12



DRAIN BOX - 6'

SKU: DBG72-12-12



DRAIN BOX - 8'

SKU: DBG96-12-12



DUAL CARTRIDGE RCF POLYURETHANE EXPANDING FOAM

SKU: FG20077



DUAL FLOAT - STANDARD CONTROLLER

SKU: N/A



EPICOL T

SKU: 120298



FLEXIBLE HOSE FOR INJECTION PUMP

SKU: DISTROWHIP40



HENRY 930-18 POLY-TAC

SKU: BK018621



HENRY BLUESKIN WP200

SKU: HEWP200937



HENRY CM100

SKU: HE78060073



HOSE BARB TO MALE PIPE CONNECTOR 1/8" TO 1/8"

SKU: 33.4110



IMPERMASHIELD R COAT

SKU: IMPERMAR5



IMPERMASHIELD SD SPRAY COAT

SKU: IMPERMASD55



IMPERMASHIELD T COAT

SKU: IMPERMAT5



INJECTION HOSE ADAPTER 90°

SKU: FU-3459-04-02



INJECTION HOSE ADAPTER STRAIGHT

SKU: FU-3269-04-02



INJECTION PACKER WITH ZERK

SKU: DISTROPACKNYL



KIT BOWED WALL REPAIR UNIDIRECTIONAL VERTICAL 400GSM 6" X 8'

SKU: FG20036



KIT CRACK REPAIR BIDIRECTIONAL 560GSM 12" X 8'

SKU: FG20053



LANDSCAPING NAILS - SPIRAL

SKU: CLOUSPLSP250



LANDSCAPING NAILS - COMMON

SKU: CLOUSPLC50



MALE CONNECTOR 1/4" TO THREAD 1/8"

SKU: 32.1156



MAPEI - PLANISEAL PLUG

SKU: 2437025



MAPEI - PLANITOP 23

SKU: 2758720



MAPEI - PLANITOP X

SKU: 2757423



MAPEI - PLANITOP XS

SKU: 2757323



MAPEI - RESFOAM 1KM

SKU: 2446120



MAPEI - RESFOAM HB 45

SKU: 2445958



MAPEI - RESFOAM HL 35

SKU: 2445619-1



MAPEI - RESFOAM PF

SKU: 2445419



MAPEI EPOJET

SKU: 1561144 (399ml) / 1561111KIT (11.35L)



MEAN CLEAN

SKU: DISTROMEAN5GAL



NUT SETTER 5/16" NON-MAGNETIC FOR ZERKS

SKU: FU34590402



NYLON TUBING 1/4" OD

SKU: 40.1140



PLASTIC BORDER FOR PAVERS

SKU: N/A



PLASTIC DEEP TRAY - 2L

SKU: ZTR200



POLYBITUME 570-05

SKU: BK570S664 (300ml) / BK570S686 (850ml) / 694266611003 (10kg)



RCF EPOXY GUN DUAL CARTRIDGE

SKU: FG20023



RCF HIGH STRENGTH ANCHORING EPOXY PASTE

SKU: FG20075 (600ml) / FG20177 (2 Gal.)



RCF STRUCTURAL EPOXY INJECTION RESIN

SKU: FG20076



REDUCER MALE CONNECTOR 3/8" TO 1/4"

SKU: 32.3382



REDUCER MALE CONNECTOR 5/16" TO 1/4"

SKU: 32.3370



ROBUST CAULKING GUN FOR 300ML CARTRIDGES

SKU: 106617



SPETEC GT350

SKU: 101888



SPETEC H100

SKU: 101895



SPETEC PUMP CLEANER

SKU: 103001



SPETEC SEAL F400

SKU: 101884



SPLIT FOAM SLEEVE - 9" X 3/4"

SKU: Z9SF20



STAINLESS STEEL SILICONE FLUID FILLED PRESSURE GAUGE - 0 - 1000 PSI - LM MOUNT

SKU: 62.6670



STAINLESS STEEL SILICONE FLUID FILLED PRESSURE GAUGE - 0 - 10000 PSI - LM MOUNT

SKU: 62.6695



**STAINLESS STEEL
SILICONE FLUID FILLED
PRESSURE GAUGE - 0 -
4000 PSI - LM MOUNT**

SKU: 62.6688



STOPAQ 2100 AQUASTOP

SKU: 103025



**TAMPICO FIBER BRUSH -
13" X 1" X 3"**

SKU: 95006



TCT HOLE SAW

SKU: DISTROTCT325



THIROCO T-60

SKU: T60189



**THIROCO T20 - PLASTIC
CEMENT**

SKU: T20020



THIROCO T20W - PLASTIC CEMENT - WINTER GRADE

SKU: T20W20



UNION MALE CONNECTOR 1/4" TO 1/4"

SKU: 32.2158



WiFi MODULE

SKU: PS-WIFI2



WINDOW WELLS

SKU: MG1082222