



DISTROCAN



CATALOGUE DE PRODUIT

2025

333 St-Hubert, Laval, QC, H7G2Y5
1-800-619-0916 • info@distrocan.ca

distrocan.ca

CEMENTITIOUS PRODUCTS

ACCESSORIES



**TAMPICO FIBER BRUSH -
13" X 1" X 3"**

SKU: 95006

MORTARS



DISTROCAN - JET SET 1-3 MIN

SKU: JETSET13



DISTROCAN - JET SET 3-5 MIN

SKU: JETSET35



DISTROCAN - JET SET 5-10 MIN

SKU: JETSET510



MAPEI - PLANITOP 23

SKU: 2758720



MAPEI - PLANITOP X

SKU: 2757423



MAPEI - PLANITOP XS

SKU: 2757323

DAMP PROOFING PRODUCTS

ACCESSORIES



CAGE FOR ROLLER - 9 1/2"

SKU: ZFR499N



PAINT SLEEVES - PACK OF 10

SKU: Z9T1510



PLASTIC DEEP TRAY - 2L

SKU: ZTR200



SPLIT FOAM SLEEVE - 9" X 3/4"

SKU: Z9SF20



**TAMPICO FIBER BRUSH -
13" X 1" X 3"**

SKU: 95006



**THIROCO T20 - PLASTIC
CEMENT**

SKU: T20020



**THIROCO T20W - PLASTIC
CEMENT - WINTER GRADE**

SKU: T20W20

SEALERS



BAKOR 700-01

SKU: BK70001074

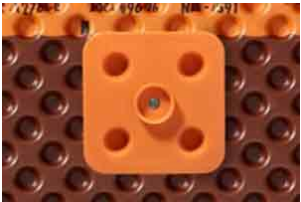


THIROCO T-60

SKU: T60189

DELTA PRODUCTS

ACCESSORIES



DELTA FASTNER

SKU: 22610005 / 22610006



DELTA MOLD STRIP

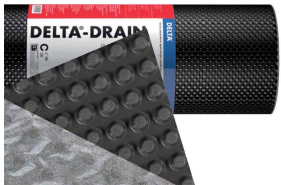
SKU: 22610021



DELTA SEALANT

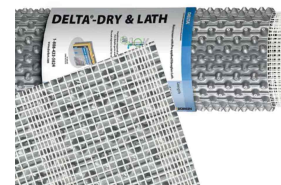
SKU: 22610015

MEMBRANES



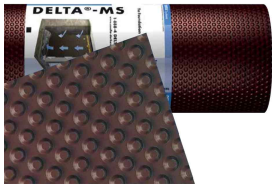
DELTA DRAIN

SKU: 22600014 / 22600015



DELTA DRY & LATH

SKU: N/A



DELTA MS

SKU: 22600001 / 22600002 / 22600003 /
22600004 / 22600005 / 22600006



DELTA VENT S

SKU: N/A



DELTA VENT SA

SKU: N/A

FITTINGS

HDPE



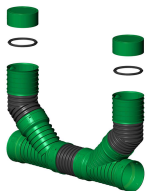
3" TEE

SKU: 1T0033



3"/ 4" MALE CAP

SKU: 1B0035 / 1B0045



4" CLEANOUT CHIMNEY

SKU: 830004 / 2B100CG



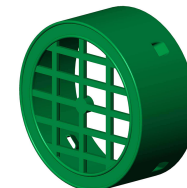
4" ELBOW, 90°

SKU: 1C0049



4" FEMALE CAP WITH CLIP

SKU: 2B100CV



4" FEMALE GRATE CAP

SKU: 1TTG04C



**4" HDPE PIPE TO PVC PIPE
ADAPTER**

SKU: 1ADRC04



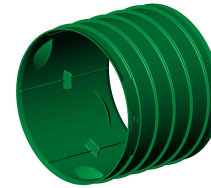
4" TEE-WYE

SKU: 1TY044



**4" UNIVERSAL DRAIN
ADAPTER**

SKU: 1ADRCU04



**4" FEMALE-FEMALE
COUPLER**

SKU: 3MCC004C



4" WYE

SKU: 1DY004

PVC-MUNICIPAL



4" 5" 6" 8" COUPLING

SKU: 33ACOUP04GG



4" 5" 6" 8" ELBOW 22 1/2°

SKU: 21A2204GG



4" 5" 6" 8" ELBOW 45°

SKU: 21A4504GG



4" 5" 6" 8" ELBOW 45°

SKU: 22A4504GS



4" 5" 6" 8" TEE

SKU: 07A040404GGG



4" 5" 6" 8" WYE

SKU: 01A040404GGG



4" 6" 8" 90° SHORT RADIUS

SKU: 21A9004GG



4" 6" 8" 90° SHORT RADIUS

SKU: 22A9004GS



4" 6" 8" TEE WYE

SKU: 04A040404GGG



4" 90° LONG RADIUS

SKU: 21A9004LRGG

PVC-PLUMBING



4" CAP, NO THREAD

SKU: P1604



4" COUPLING WITH STOPPER

SKU: P604



4" ELBOW, 22 1/2°

SKU: P1704



4" ELBOW, 45°

SKU: P404



4" ELBOW, 90° LONG TURN

SKU: P256



4" FITTING CLEANOUT

SKU: P1504



4" FITTING CLEANOUT

SKU: P1404



4" PUSH FIT ADAPTER

SKU: IC44P



4" TEE

SKU: P104



4" TEE-WYE

SKU: P156



4" WYE

SKU: P304



4" ELBOW, 45°

SKU: P504



4" THREADED PLUG

SKU: P1154

RUBBER COUPLINGS



**CAST IRON/PLASTIC/STEEL
TO CAST
IRON/PLASTIC/STEEL**

SKU: 1056-44



**CONCRETE TO CAST
IRON/PLASTIC/STEEL**

SKU: 1006-44



**DUCTILE IRON TO CAST
IRON/PLASTIC/STEEL**

SKU: 1051-44

INJECTION PRODUCTS

ACCESSORIES



ALEMITE GASKET REPAIR KIT

SKU: 336523



ALEMITE GREASE GUN FOR POLYURETHANE INJECTION

SKU: 586-B



ALEMITE SPRING REPAIR KIT

SKU: 393756-6



BALL VALVE 1/8" X 1/8" FF THREADED BOTH SIDES

SKU: 14.1102



BOX OF 50 PROFESSIONAL BLACK NITRILE GLOVES

SKU: 34606-M / 34606-XL



BRASS FITTING FEMALE TO MALE PIPE ADAPTER 1/8" MALE TO 1/4" FEMALE

SKU: 33.1912



BRASS FITTING STREET TEE 1/8" FEMALE WITH TWO 1/8" FEMALE

SKU: 33.3410



COUPLER FOR INJECTION

SKU: DISTROCOUPRED



FLEXIBLE HOSE FOR INJECTION PUMP

SKU: DISTROWHIP40



HOSE BARB TO MALE PIPE CONNECTOR 1/8" TO 1/8"

SKU: 33.4110



INJECTION HOSE ADAPTER 90°

SKU: FU-3459-04-02



INJECTION HOSE ADAPTER STRAIGHT

SKU: FU-3269-04-02



INJECTION HOSES FOR GREASE GUNS

SKU: ECH-720-02MM35



INJECTION PACKER WITH ZERK

SKU: DISTROPACKNYL



MALE CONNECTOR 1/4" TO THREAD 1/8"

SKU: 32.1156



NUT SETTER 5/16" NON-MAGNETIC FOR ZERKS

SKU: FU34590402



NYLON TUBING 1/4" OD

SKU: 40.1140



RCF EPOXY GUN DUAL CARTRIDGE

SKU: FG20023



REDUCER MALE CONNECTOR 3/8" TO 1/4"

SKU: 32.3382



REDUCER MALE CONNECTOR 5/16" TO 1/4"

SKU: 32.3370



**STAINLESS STEEL
SILICONE FLUID FILLED
PRESSURE GAUGE - 0 -
1000 PSI - LM MOUNT**

SKU: 62.6670



**STAINLESS STEEL
SILICONE FLUID FILLED
PRESSURE GAUGE - 0 -
10000 PSI - LM MOUNT**

SKU: 62.6695



**STAINLESS STEEL
SILICONE FLUID FILLED
PRESSURE GAUGE - 0 -
4000 PSI - LM MOUNT**

SKU: 62.6688



TEFLON 1/2" X 40'

SKU: 33.9080



**UNION MALE CONNECTOR
1/4" TO 1/4"**

SKU: 32.2158

EPOXY PRODUCTS



EPICOL T

SKU: 120298



MAPEI EPOJET

SKU: 1561144 (399ml) / 1561111KIT (11.35L)



RCF HIGH STRENGTH ANCHORING EPOXY PASTE

SKU: FG20075 (600ml) / FG20177 (2 Gal.)



RCF STRUCTURAL EPOXY INJECTION RESIN

SKU: FG20076

POLYURETHANE RESINS



DUAL CARTRIDGE RCF POLYURETHANE EXPANDING FOAM

SKU: FG20077



MAPEI - RESFOAM 1KM

SKU: 2446120



MAPEI - RESFOAM HB 45

SKU: 2445958



MAPEI - RESFOAM HL 35

SKU: 2445619-1



MAPEI - RESFOAM PF

SKU: 2445419



SPETEC GEN ACC

SKU: 102426



SPETEC GEN ACC FAST

SKU: 102428



SPETEC GT350

SKU: 101888



SPETEC H100

SKU: 101895



SPETEC PUMP CLEANER

SKU: 103001



SPETEC SEAL F400

SKU: 101884



STOPAQ 2100 AQUASTOP

SKU: 103025

LANDSCAPING

ACCESSORIES



LANDSCAPING NAILS - SPIRAL

SKU: CLOUSPLSP250



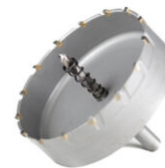
LANDSCAPING NAILS - COMMON

SKU: CLOUSPLC50



PLASTIC BORDER FOR PAVERS

SKU: N/A



TCT HOLE SAW

SKU: DISTROTCT325

PIPES

HDPE



3" PERFORATED (TYPE 2)

SKU: 100304 / 100313



4" NON-PERFORATED

SKU: 100455



4" PERFORATED (TYPE 2)

SKU: 100442



4" SOLFLO MAX NON-PERFORATED

SKU: 320420 / 320415



4" SOLIFLEX PERFORATED (TYPE 3)

SKU: 120444



4" PERFORATED (MEGA 3)

SKU: 100461 / 100447 / 100445

PVC-MUNICIPAL



SDR28

SKU: SG2804014WH / SG2805014WH /
SG2806014WH



SDR35

SKU: SG3504014 / SG3505014 / SG3506014 /
SG3508014

PVC-PLUMBING



4" PERFORATED, 7 HOLE

SKU: DISTROPVC47TROUS

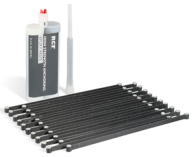


4" PERFORATED, 3 HOLE

SKU: DISTROPVC43TROUS

STRUCTURAL REINFORCEMENT

STRUCTURAL REPAIR KITS



**CONCRETE CRACK LOCK
KIT - 20 PACK WITH HIGH
STRENGTH ANCHORING
EPOXY PASTE**

SKU: FG20040



**KIT CRACK REPAIR
BIDIRECTIONAL 560GSM
12" X 8'**

SKU: FG20053



**KIT BOWED WALL REPAIR
UNIDIRECTIONAL VERTICAL
400GSM 6" X 8'**

SKU: FG20036

WATER PROOFING MEMBRANES

ACCESSORIES



BAKOR BLUESKIN ADHESIVE

SKU: BK101677



BAKOR POLY FAB

SKU: BKPF600



BAKOR POLYPROPYLENE PROTECTION BOARD

SKU: BK99031458



BAKOR YELLOW JACKET

SKU: BK99006876 (6'' x 150') / BK99006875
(36'' x 150')



CAGE FOR ROLLER - 9 1/2"

SKU: ZFR499N



HENRY 930-18 POLY-TAC

SKU: BK018621



MEAN CLEAN

SKU: DISTROMEAN5GAL



PACK OF 10 PAINT SLEEVES

SKU: Z9T15-10



PLASTIC DEEP TRAY - 2L

SKU: ZTR200



POLYBITUME 570-05

SKU: BK570S664 (300ml) / BK570S686 (850ml) / 694266611003 (10kg)



ROBUST CAULKING GUN FOR 300ML CARTRIDGES

SKU: 106617



SPLIT FOAM SLEEVE - 9" X 3/4"

SKU: Z9SF20



SUPER INDUSTRIAL STRIPPING GLOVE X-LARGE

SKU: 4003



TAMPICO FIBER BRUSH - 13" X 1" X 3"

SKU: 95006



THIROCO T20 - PLASTIC CEMENT

SKU: T20020



THIROCO T20W - PLASTIC CEMENT - WINTER GRADE

SKU: T20W20

SELF-ADHESIVE



HENRY BLUESKIN WP200

SKU: HEWP200937

SOLVENT BASED



BAKOR AQUA-BLOC 770-06

SKU: BK77006070

THERMOSEALING MEMBRANES



BAKOR NP180 PP

SKU: BH180PP985

URETHANE BASED



HENRY CM100

SKU: HE78060073

WATER BASED



BAKOR AQUA-BLOC 720-38

SKU: BK72038074



IMPERMASHIELD R COAT

SKU: IMPERMAR5



IMPERMASHIELD SD SPRAY COAT

SKU: IMPERMASD55



IMPERMASHIELD T COAT

SKU: IMPERMAT5

DRAIN BOXES

GALVANIZED



DRAIN BOX - 16" X 16" X 12"

SKU: DBG1616



DRAIN BOX - 2'

SKU: CP24-12-12



DRAIN BOX - 4'

SKU: CP48-12-12



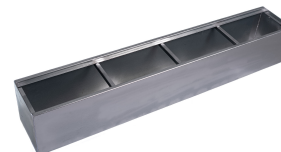
DRAIN BOX - 4' X 6" X 12"

SKU: DBG96-6-12



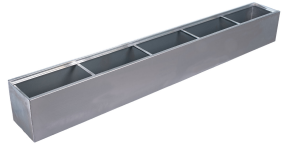
DRAIN BOX - 4' X 6" X 12"

SKU: DBG48-6-12



DRAIN BOX - 6'

SKU: DBG72-12-12



DRAIN BOX - 8'

SKU: DBG96-12-12

PLASTIC



**ALUMINUM CHECKER
PLATE COVER - 18" X 24"**

SKU: CA1824



**FLOOR DRAIN - 12" X 12"
X 12"**

SKU: 1ZD1212



**FLOOR DRAIN - 18" X 24"
X 18"**

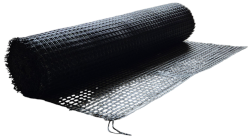
SKU: 1ZD1824P



**FLOOR DRAIN - 18" X 24"
X 25"**

SKU: 1ZD2425P

GEOSYNTHETICS



GEOMAX GEOGRID

SKU: GEOMAXGG4350



GEOMAX WOVEN GEOTEXTILE

SKU: GEOMAXW13350



GEOMAX GEOTEXTILE

SKU: GNT12350 GNT3350 GNT6350



GEOMAX NON WOVEN GEOTEXTILE

SKU: GNT12350 / GNT3350 / GNT6350

SUMP PUMP SYSTEMS

ACCESSORIES



DUAL FLOAT - STANDARD CONTROLLER

SKU: N/A



WIFI MODULE

SKU: PS-WIFI2

PITS



**18" X 30" RADON-PROOF
PIT**

SKU: SF30BA



**18" X 22" / 30" RADON-
PROOF PIT COVER**

SKU: SF2000E



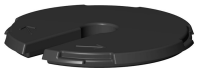
**18" X 22" RADON-PROOF
PIT**

SKU: SF20



**20" X 24" CORRUGATED
PUMP PIT**

SKU: 1UCU025



**20" X 24" CORRUGATED
PUMP COVER**

SKU: 1UCV025

PUMPS



BACKUP COMBO PUMP

SKU: PSC22



CAST IRON PUMP

SKU: N/A

WINDOW WELLS



WINDOW WELLS

SKU: MG1082222

ALL PRODUCTS



GEOMAX WOVEN GEOTEXTILE

SKU: GEOMAXW13350



GEOMAX GEOTEXTILE

SKU: GNT12350 GNT3350 GNT6350



GEOMAX NON WOVEN GEOTEXTILE

SKU: GNT12350 / GNT3350 / GNT6350



4" COUPLING

SKU: 1M0040



ALEMITE GASKET REPAIR KIT

SKU: 336523



ALEMITE GREASE GUN FOR POLYURETHANE INJECTION

SKU: 586-B



ALUMINUM CHECKER PLATE COVER - 18" X 24"

SKU: CA1824



BACKUP COMBO PUMP

SKU: PSC22



BAKOR 700-01

SKU: BK70001074



BAKOR AQUA-BLOC 720-38

SKU: BK72038074



BAKOR AQUA-BLOC 770-06

SKU: BK77006070



BAKOR BLUESKIN ADHESIVE

SKU: BK101677



BAKOR NP180 PP

SKU: BH180PP985



BAKOR POLY FAB

SKU: BKPF600



BAKOR POLYPROPYLENE PROTECTION BOARD

SKU: BK99031458



BAKOR YELLOW JACKET

SKU: BK99006876 (6" x 150') / BK99006875 (36" x 150')



BALL VALVE 1/8" X 1/8" FF THREADED BOTH SIDES

SKU: 14.1102



BRASS FITTING FEMALE TO MALE PIPE ADAPTER 1/8" MALE TO 1/4" FEMALE

SKU: 33.1912



BRASS FITTING STREET TEE 1/8" FEMALE WITH TWO 1/8" FEMALE

SKU: 33.3410



CAGE FOR ROLLER - 9 1/2"

SKU: ZFR499N



CAST IRON PUMP

SKU: N/A

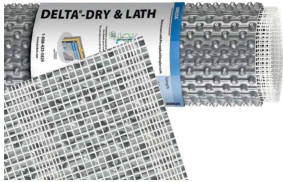


CONCRETE CRACK LOCK KIT - 20 PACK WITH HIGH STRENGTH ANCHORING



COUPLER FOR INJECTION

SKU: DISTROCOUPRED



DELTA DRY & LATH

SKU: N/A



DELTA MOLD STRIP

SKU: 22610021



DELTA SEALANT

SKU: 22610015



EPOXY PASTE

SKU: FG20040

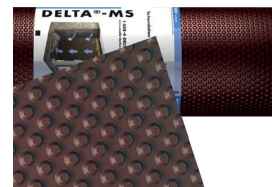
DELTA DRAIN

SKU: 22600014 / 22600015



DELTA FASTNER

SKU: 22610005 / 22610006



DELTA MS

SKU: 22600001 / 22600002 / 22600003 / 22600004 / 22600005 / 22600006



DELTA VENT S

SKU: N/A



DELTA VENT SA

SKU: N/A



DISTROCAN - JET SET 1-3 MIN

SKU: JETSET13



DISTROCAN - JET SET 3-5 MIN

SKU: JETSET35



DISTROCAN - JET SET 5-10 MIN

SKU: JETSET510



DRAIN BOX - 16" X 16" X 12"

SKU: DBG1616



DRAIN BOX - 2'

SKU: CP24-12-12



DRAIN BOX - 4'

SKU: CP48-12-12



DRAIN BOX - 4' X 6" X 12"

SKU: DBG48-6-12



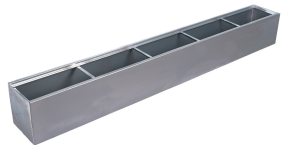
DRAIN BOX - 4' X 6" X 12"

SKU: DBG96-6-12



DRAIN BOX - 6'

SKU: DBG72-12-12



DRAIN BOX - 8'

SKU: DBG96-12-12



DUAL CARTRIDGE RCF POLYURETHANE EXPANDING FOAM

SKU: FG20077



DUAL FLOAT - STANDARD CONTROLLER

SKU: N/A



EPICOL T

SKU: 120298



FLEXIBLE HOSE FOR INJECTION PUMP

SKU: DISTROWHIP40



HENRY 930-18 POLY-TAC

SKU: BK018621



HENRY BLUESKIN WP200

SKU: HEWP200937



HENRY CM100

SKU: HE78060073



HOSE BARB TO MALE PIPE CONNECTOR 1/8" TO 1/8"

SKU: 33.4110



IMPERMASHIELD R COAT

SKU: IMPERMAR5



IMPERMASHIELD SD SPRAY COAT

SKU: IMPERMASD55



IMPERMASHIELD T COAT

SKU: IMPERMAT5



INJECTION HOSE ADAPTER 90°

SKU: FU-3459-04-02



INJECTION HOSE ADAPTER STRAIGHT

SKU: FU-3269-04-02



INJECTION PACKER WITH ZERK

SKU: DISTROPACKNYL



KIT BOWED WALL REPAIR UNIDIRECTIONAL VERTICAL 400GSM 6" X 8'

SKU: FG20036



KIT CRACK REPAIR BIDIRECTIONAL 560GSM 12" X 8'

SKU: FG20053



LANDSCAPING NAILS - SPIRAL

SKU: CLOUSPLSP250



LANDSCAPING NAILS - COMMON

SKU: CLOUSPLC50



MALE CONNECTOR 1/4" TO THREAD 1/8"

SKU: 32.1156



MAPEI - PLANISEAL PLUG

SKU: 2437025



MAPEI - PLANITOP 23

SKU: 2758720



MAPEI - PLANITOP X

SKU: 2757423



MAPEI - PLANITOP XS

SKU: 2757323



MAPEI - RESFOAM 1KM

SKU: 2446120



MAPEI - RESFOAM HB 45

SKU: 2445958



MAPEI - RESFOAM HL 35

SKU: 2445619-1



MAPEI - RESFOAM PF

SKU: 2445419



MAPEI EPOJET

SKU: 1561144 (399ml) / 1561111KIT (11.35L)



MEAN CLEAN

SKU: DISTROMEAN5GAL



NUT SETTER 5/16" NON-MAGNETIC FOR ZERKS

SKU: FU34590402



NYLON TUBING 1/4" OD

SKU: 40.1140



PLASTIC BORDER FOR PAVERS

SKU: N/A



PLASTIC DEEP TRAY - 2L

SKU: ZTR200



POLYBITUME 570-05

SKU: BK570S664 (300ml) / BK570S686 (850ml) / 694266611003 (10kg)



RCF EPOXY GUN DUAL CARTRIDGE

SKU: FG20023



RCF HIGH STRENGTH ANCHORING EPOXY PASTE

SKU: FG20075 (600ml) / FG20177 (2 Gal.)



RCF STRUCTURAL EPOXY INJECTION RESIN

SKU: FG20076



REDUCER MALE CONNECTOR 3/8" TO 1/4"

SKU: 32.3382



REDUCER MALE CONNECTOR 5/16" TO 1/4"

SKU: 32.3370



ROBUST CAULKING GUN FOR 300ML CARTRIDGES

SKU: 106617



SPETEC GT350

SKU: 101888



SPETEC H100

SKU: 101895



SPETEC PUMP CLEANER

SKU: 103001



SPETEC SEAL F400

SKU: 101884



SPLIT FOAM SLEEVE - 9" X 3/4"

SKU: Z9SF20



STAINLESS STEEL SILICONE FLUID FILLED PRESSURE GAUGE - 0 - 1000 PSI - LM MOUNT

SKU: 62.6670



STAINLESS STEEL SILICONE FLUID FILLED PRESSURE GAUGE - 0 - 10000 PSI - LM MOUNT

SKU: 62.6695



**STAINLESS STEEL
SILICONE FLUID FILLED
PRESSURE GAUGE - 0 -
4000 PSI - LM MOUNT**

SKU: 62.6688



STOPAQ 2100 AQUASTOP

SKU: 103025



**TAMPICO FIBER BRUSH -
13" X 1" X 3"**

SKU: 95006



TCT HOLE SAW

SKU: DISTROTCT325



THIROCO T-60

SKU: T60189



**THIROCO T20 - PLASTIC
CEMENT**

SKU: T20020



THIROCO T20W - PLASTIC CEMENT - WINTER GRADE

SKU: T20W20



UNION MALE CONNECTOR 1/4" TO 1/4"

SKU: 32.2158



WiFi MODULE

SKU: PS-WIFI2



WINDOW WELLS

SKU: MG1082222

INDEX

1

18" x 22" / 30" Radon-Proof Pit Cover 42

18" x 22" Radon-Proof Pit 42

2

20" x 24" Corrugated Pump Cover 42

20" x 24" Corrugated Pump Pit 42

3

3" Tee 9

3"/ 4" Male Cap 9

3" Perforated (Type 2) 24

4

4" 5" 6" 8" Coupling 11

4" 5" 6" 8" Elbow 22 1/2° 11

4" 5" 6" 8" Elbow 45° 11

4" 5" 6" 8" Tee 11

4" 5" 6" 8" Wye 11

4" 6" 8" 90° Short Radius 11

4" 6" 8" Tee Wye 12

4" 90° Long Radius 12

4" Elbow, 45° 14

4" Perforated (Mega 3) 24

4" Perforated, 3 Hole 27

4" Threaded Plug 14

4" Wye 10

4" Cap, No Thread 13

4" Cleanout Chimney 9

4" Coupling 45

4" Coupling with Stopper 13

4" Elbow, 22 1/2° 13

4" Elbow, 45° 13

4" Elbow, 90° Long Turn 13
4" Elbow, 90° 9
4" Female Cap With Clip 9
4" Female Grate Cap 9
4" Fitting Cleanout 13
4" HDPE Pipe to PVC Pipe Adapter 10
4" Non-Perforated 24
4" Perforated (Type 2) 24
4" Perforated, 7 Hole 27
4" Push Fit Adapter 13
4" SOLFLO MAX Non-Perforated 24
4" SOLIFLEX Perforated (Type 3) 24
4" Tee 14
4" Tee-Wye 10, 14
4" Universal Drain Adapter 10
4" Wye 14
4" Female-Female Coupler 10

A

Alemite Gasket Repair Kit 16, 45
Alemite Grease Gun for Polyurethane Injection 16, 45
Alemite Spring Repair Kit 16
Aluminum Checker Plate Cover - 18" x 24" 39, 46

B

Backup Combo Pump 43, 46
Bakor 700-01 6, 46
Bakor Aqua-Bloc 720-38 36, 46
Bakor Aqua-Bloc 770-06 33, 46
Bakor Blueskin Adhesive 29, 46
Bakor NP180 PP 34, 46
Bakor Poly Fab 29, 46
Bakor Polypropylene Protection Board 29, 47
Bakor Yellow Jacket 29, 47
Ball Valve 1/8" x 1/8" FF Threaded Both Sides 16, 47
Box of 50 Professional Black Nitrile Gloves 16
Brass Fitting Female to Male Pipe Adapter 1/8" Male to 1/4" Female 16, 47
Brass Fitting Street Tee 1/8" Female with Two 1/8" Female 17, 47

C

Cage for Roller - 9 1/2" 4, 29, 47
Cast Iron Pump 43, 47
Cast Iron/Plastic/Steel to Cast Iron/Plastic/Steel 15
Concrete Crack Lock Kit - 20 Pack with High Strength Anchoring Epoxy Paste 28, 47
Concrete to Cast Iron/Plastic/Steel 15
Coupler for Injection 17, 48

D

Delta Drain 8, 48
Delta Dry & Lath 8, 48
Delta Fastner 7, 48
Delta Mold Strip 7, 48
Delta MS 8, 48
Delta Sealant 7, 48
Delta Vent S 8, 48
Delta Vent SA 8, 49
Distrocan - Jet Set 1-3 Min 3, 49
Distrocan - Jet Set 3-5 Min 3, 49
Distrocan - Jet Set 5-10 Min 3, 49
Drain Box - 16" x 16" x 12" 37, 49
Drain Box - 2' 37, 49
Drain Box - 4' 37, 49
Drain Box - 4' x 6" x 12" 37, 49, 50
Drain Box - 6' 37, 50
Drain Box - 8' 38, 50
Dual Cartridge RCF Polyurethane Expanding Foam 21, 50
Dual Float - Standard Controller 41, 50
Ductile Iron to Cast Iron/Plastic/Steel 15

E

EPICOL T 20, 50

F

Flexible Hose for Injection Pump 17, 50
Floor Drain - 12" x 12" x 12" 39
Floor Drain - 18" x 24" x 18" 39
Floor Drain - 18" x 24" x 25" 39

G

GEOMAX Geogrid 40

GEOMAX Geotextile 40, 45

GEOMAX Non Woven Geotextile 40, 45

GEOMAX Woven Geotextile 40, 45

H

Henry 930-18 Poly-TAC 29, 50

Henry Blueskin WP200 32, 51

Henry CM100 35, 51

Hose barb to male pipe connector 1/8" to 1/8" 17, 51

I

ImpermaShield R Coat 36, 51

ImpermaShield SD Spray Coat 36, 51

ImpermaShield T Coat 36, 51

Injection Hose Adapter 90° 17, 51

Injection hose adapter Straight 17, 51

Injection Hoses for Grease Guns 18

Injection Packer with Zerk 18, 52

K

Kit Bowed Wall Repair Unidirectional Vertical 400gsm 6" x 8' 28, 52

Kit Crack Repair Bidirectional 560GSM 12" x 8' 28, 52

L

Landscaping Nails - Spiral 23, 52

Landscaping Nails - Common 23, 52

M

Male Connector 1/4" to Thread 1/8" 18, 52

Mapei - Planiseal Plug 52

Mapei - Planitop 23 3, 52

Mapei - Planitop X 3, 53

Mapei - Planitop XS 3, 53

MAPEI - RESFOAM 1KM 21, 53

MAPEI - RESFOAM HB 45 21, 53

MAPEI - RESFOAM HL 35 21, 53

MAPEI - RESFOAM PF 21, 53

Mapei Epojet 20, 53

Mean Clean 30, 53

N

Nut Setter 5/16" Non-Magnetic for Zerks 18, 53

Nylon Tubing 1/4" OD 18, 53

P

Pack of 10 Paint Sleeves 30

Paint Sleeves - Pack of 10 4

Plastic Border for Pavers 23, 54

Plastic Deep Tray - 2L 4, 30, 54

Polybitume 570-05 30, 54

R

RCF Epoxy Gun Dual Cartridge 18, 54

RCF High Strength Anchoring Epoxy Paste 20, 54

RCF Structural Epoxy Injection Resin 20, 54

Reducer Male Connector 3/8" to 1/4" 18, 54

Reducer Male Connector 5/16" to 1/4" 18, 54

Robust Caulking Gun for 300ml Cartridges 30, 55

S

SDR28 26

SDR35 26

SPETEC GEN ACC 21

SPETEC GEN ACC FAST 21

SPETEC GT350 21, 55

SPETEC H100 22, 55

SPETEC PUMP CLEANER 22, 55

SPETEC SEAL F400 22, 55

Split Foam Sleeve - 9" x 3/4" 4, 30, 55

Stainless Steel Silicone Fluid Filled Pressure Gauge - 0 - 1000 PSI - LM Mount 19, 55

Stainless Steel Silicone Fluid Filled Pressure Gauge - 0 - 10000 PSI - LM Mount 19, 55

Stainless Steel Silicone Fluid Filled Pressure Gauge - 0 - 4000 PSI - LM Mount 19, 56

STOPAQ 2100 AQUASTOP 22, 56

Super Industrial Stripping Glove X-Large 31

T

Tampico Fiber Brush - 13" x 1" x 3" 2, 4, 31, 56

TCT Hole Saw 23, 56

Teflon 1/2" x 40' 19

Thiroco T-60 6, 56

Thiroco T20 - Plastic Cement 4, 31, 56

Thiroco T20W - Plastic Cement - Winter Grade 5, 31, 56

U

Union Male Connector 1/4" to 1/4" 19, 56

W

Wifi Module 41, 57

Window Wells 44, 57

18" x 30" Radon-Proof Pit 42