



**DISTROCAN**



# CATALOGUE DE PRODUIT

2025

333 St-Hubert, Laval, QC, H7G2Y5  
1-800-619-0916 • [info@distrocan.ca](mailto:info@distrocan.ca)

[distrocan.ca](http://distrocan.ca)

## ALL PRODUCTS



### **GEOMAX WOVEN GEOTEXTILE**

**SKU:** GEOMAXW13350



### **GEOMAX GEOTEXTILE**

**SKU:** GNT12350 GNT3350 GNT6350



### **GEOMAX NON WOVEN GEOTEXTILE**

**SKU:** GNT12350 / GNT3350 / GNT6350



### **4" COUPLING**

**SKU:** 1M0040



### **ALEMITE GASKET REPAIR KIT**

**SKU:** 336523



### **ALEMITE GREASE GUN FOR POLYURETHANE INJECTION**

**SKU:** 586-B



## ALUMINUM CHECKER PLATE COVER - 18" X 24"

SKU: CA1824



## BACKUP COMBO PUMP

SKU: PSC22



## BAKOR 700-01

SKU: BK70001074



## BAKOR AQUA-BLOC 720-38

SKU: BK72038074



## BAKOR AQUA-BLOC 770-06

SKU: BK77006070



## BAKOR BLUESKIN ADHESIVE

SKU: BK101677



## BAKOR NP180 PP

SKU: BH180PP985



## BAKOR POLY FAB

SKU: BKPF600



## BAKOR POLYPROPYLENE PROTECTION BOARD

SKU: BK99031458



## BAKOR YELLOW JACKET

SKU: BK99006876 (6" x 150') / BK99006875 (36" x 150')



## BALL VALVE 1/8" X 1/8" FF THREADED BOTH SIDES

SKU: 14.1102



## BRASS FITTING FEMALE TO MALE PIPE ADAPTER 1/8" MALE TO 1/4" FEMALE

SKU: 33.1912



## BRASS FITTING STREET TEE 1/8" FEMALE WITH TWO 1/8" FEMALE

SKU: 33.3410



## CAGE FOR ROLLER - 9 1/2"

SKU: ZFR499N



## CAST IRON PUMP

SKU: N/A



## CONCRETE CRACK LOCK KIT - 20 PACK WITH HIGH STRENGTH ANCHORING



## COUPLER FOR INJECTION

SKU: DISTROCOUPRED



## DELTA DRY & LATH

SKU: N/A



## DELTA MOLD STRIP

SKU: 22610021



## DELTA SEALANT

SKU: 22610015

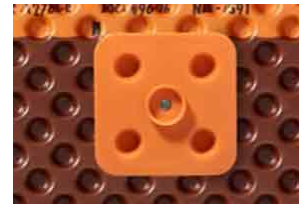


## EPOXY PASTE

SKU: FG20040

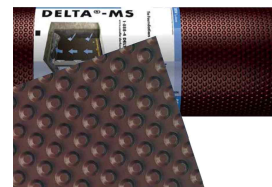
## DELTA DRAIN

SKU: 22600014 / 22600015



## DELTA FASTNER

SKU: 22610005 / 22610006



## DELTA MS

SKU: 22600001 / 22600002 / 22600003 / 22600004 / 22600005 / 22600006



## DELTA VENT S

SKU: N/A



## DELTA VENT SA

SKU: N/A



## DISTROCAN - JET SET 1-3 MIN

SKU: JETSET13



## DISTROCAN - JET SET 3-5 MIN

SKU: JETSET35



## DISTROCAN - JET SET 5-10 MIN

SKU: JETSET510



## DRAIN BOX - 16" X 16" X 12"

SKU: DBG1616



## DRAIN BOX - 2'

SKU: CP24-12-12



## DRAIN BOX - 4'

SKU: CP48-12-12



## DRAIN BOX - 4' X 6" X 12"

SKU: DBG48-6-12



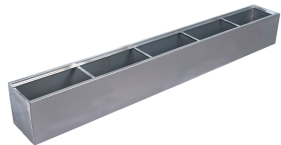
### **DRAIN BOX - 4' X 6" X 12"**

**SKU:** DBG96-6-12



### **DRAIN BOX - 6'**

**SKU:** DBG72-12-12



### **DRAIN BOX - 8'**

**SKU:** DBG96-12-12



### **DUAL CARTRIDGE RCF POLYURETHANE EXPANDING FOAM**

**SKU:** FG20077



### **DUAL FLOAT - STANDARD CONTROLLER**

**SKU:** N/A



### **EPICOL T**

**SKU:** 120298



### **FLEXIBLE HOSE FOR INJECTION PUMP**

**SKU:** DISTROWHIP40



### **HENRY 930-18 POLY-TAC**

**SKU:** BK018621



## HENRY BLUESKIN WP200

SKU: HEWP200937



## HENRY CM100

SKU: HE78060073



## HOSE BARB TO MALE PIPE CONNECTOR 1/8" TO 1/8"

SKU: 33.4110



## IMPERMASHIELD R COAT

SKU: IMPERMAR5



## IMPERMASHIELD SD SPRAY COAT

SKU: IMPERMASD55



## IMPERMASHIELD T COAT

SKU: IMPERMAT5



## INJECTION HOSE ADAPTER 90°

SKU: FU-3459-04-02



## INJECTION HOSE ADAPTER STRAIGHT

SKU: FU-3269-04-02





## INJECTION PACKER WITH ZERK

SKU: DISTROPACKNYL



## KIT BOWED WALL REPAIR UNIDIRECTIONAL VERTICAL 400GSM 6" X 8'

SKU: FG20036



## KIT CRACK REPAIR BIDIRECTIONAL 560GSM 12" X 8'

SKU: FG20053



## LANDSCAPING NAILS - SPIRAL

SKU: CLOUSPLSP250



## LANDSCAPING NAILS - COMMON

SKU: CLOUSPLC50



## MALE CONNECTOR 1/4" TO THREAD 1/8"

SKU: 32.1156



## MAPEI - PLANISEAL PLUG

SKU: 2437025



## MAPEI - PLANITOP 23

SKU: 2758720



### MAPEI - PLANITOP X

SKU: 2757423



### MAPEI - PLANITOP XS

SKU: 2757323



### MAPEI - RESFOAM 1KM

SKU: 2446120



### MAPEI - RESFOAM HB 45

SKU: 2445958



### MAPEI - RESFOAM HL 35

SKU: 2445619-1



### MAPEI - RESFOAM PF

SKU: 2445419



### MAPEI EPOJET

SKU: 1561144 (399ml) / 1561111KIT (11.35L)



### MEAN CLEAN

SKU: DISTROMEAN5GAL



### NUT SETTER 5/16" NON-MAGNETIC FOR ZERKS

SKU: FU34590402



### NYLON TUBING 1/4" OD

SKU: 40.1140



## PLASTIC BORDER FOR PAVERS

SKU: N/A



## PLASTIC DEEP TRAY - 2L

SKU: ZTR200



## POLYBITUME 570-05

SKU: BK570S664 (300ml) / BK570S686 (850ml) / 694266611003 (10kg)



## RCF EPOXY GUN DUAL CARTRIDGE

SKU: FG20023



## RCF HIGH STRENGTH ANCHORING EPOXY PASTE

SKU: FG20075 (600ml) / FG20177 (2 Gal.)



## RCF STRUCTURAL EPOXY INJECTION RESIN

SKU: FG20076



## REDUCER MALE CONNECTOR 3/8" TO 1/4"

SKU: 32.3382



## REDUCER MALE CONNECTOR 5/16" TO 1/4"

SKU: 32.3370



## ROBUST CAULKING GUN FOR 300ML CARTRIDGES

SKU: 106617



## SPETEC GT350

SKU: 101888



## SPETEC H100

SKU: 101895



## SPETEC PUMP CLEANER

SKU: 103001



## SPETEC SEAL F400

SKU: 101884



## SPLIT FOAM SLEEVE - 9" X 3/4"

SKU: Z9SF20



## STAINLESS STEEL SILICONE FLUID FILLED PRESSURE GAUGE - 0 - 1000 PSI - LM MOUNT

SKU: 62.6670



## STAINLESS STEEL SILICONE FLUID FILLED PRESSURE GAUGE - 0 - 10000 PSI - LM MOUNT

SKU: 62.6695



**STAINLESS STEEL  
SILICONE FLUID FILLED  
PRESSURE GAUGE - 0 -  
4000 PSI - LM MOUNT**

**SKU:** 62.6688



**STOPAQ 2100 AQUASTOP**

**SKU:** 103025



**TAMPICO FIBER BRUSH -  
13" X 1" X 3"**

**SKU:** 95006



**TCT HOLE SAW**

**SKU:** DISTROTCT325



**THIROCO T-60**

**SKU:** T60189



**THIROCO T20 - PLASTIC  
CEMENT**

**SKU:** T20020



## THIROCO T20W - PLASTIC CEMENT - WINTER GRADE

SKU: T20W20



## UNION MALE CONNECTOR 1/4" TO 1/4"

SKU: 32.2158



## WiFi MODULE

SKU: PS-WIFI2



## WINDOW WELLS

SKU: MG1082222